

History Trail

Follow Hornsby Shire's HISTORY TRAIL Places of Interest

1. Wisemans Ferry

Wisemans Ferry was named after Solomon Wiseman and is located in the northernmost tip of the Shire on the banks of the Hawkesbury River. Here in this village is the meeting point of four local government areas of Hornsby, Hawkesbury, Baulkham Hills and Gosford. Have a drink at the Wisemans Inn and hear tales of the ghost of Mrs Wiseman.

2. Hawkesbury River

The Hawkesbury was explored by Captain Phillip soon after his arrival at Sydney Cove and he named the river after Lord Hawkesbury. Aboriginal paintings and middens can be found along its foreshores as evidence of a long habitation of the area by the traditional owners of the land.

3. Brooklyn Bridge

Work on the Brooklyn Bridge across the Hawkesbury River started in 1886. It was built by the Union Bridge Company of New York. Because of the coincidence of the names of Long Island on the Hawkesbury and Long Island on the Hudson River, the American crew named the new structure the 'Brooklyn Bridge' after its American counterpart.

4. Muogamarra Sanctuary

On the western side of Pacific Highway, 5 kms past Cowan and next to Austral Gardens is the Muogamarra Sanctuary founded in 1934 by John Tipper. Over 1093 hectares, the name means 'preserve for the future'. Muogamarra is open for weekends only from August to September. See the What's On Calendar for details.

5. Kuring-gai Chase and Bobbin Head

Kuring-gai Chase National Park was created in 1894, making it the second oldest National Park in Australia. The historic Bobbin Head precinct provides many visitors' facilities including wide open picnic grounds with shelters and BBQs, a children's playground, Visitor Information Centre, Café, boat hire and bush walking.

6. Berowra Waters Ferry

Launch your boat, drop a line, dine, fresh seafood, picnicking and BBQs or grab some fish and chips at this popular spot on the river.

7. Collingridge House

Collingridge House was built by George Collingridge. It is now the Chapel in the grounds of Hornsby Hospital in Palmerston Road Hornsby.

8. Hornsby Park

Hornsby Park is located in the civic precinct of Hornsby township on the Pacific Highway. It is opposite the Post Office, Hornsby Police Station, Hornsby Court House and Hornsby Council Chambers.

9. Lisgar Gardens

Located in Lisgar Road Hornsby, Lisgar Gardens is known as 'Hornsby's Secret Garden'. It extends along six acres of terraced land which forms a unique camellia garden created by Max Cotton in 1917. It is a popular venue for garden weddings.

10. Berowra Valley Regional Park

The Great North Walk continues through the Berowra Valley Regional Park and is accessed from a number of railway stations and residential areas.

11. St Pauls Church Wahroonga

Amid the roar of traffic at Pearces Corner

Wahroonga where the Pacific Highway meets Pennant Hills Road and the F3, is situated the historic Anglican Church of St Pauls.

12. Drill Hall, Kenley Park Normanhurst

Now located in Kenley Park off Dartford Road and the home of the Hornsby Shire Historical Society, this timber hall was originally built in the vicinity of Hornsby TAFE for military training for the Boer War. After 1907 the drill hall was made available for Hornsby Council meetings, a temporary court house, a public hall and a school canteen!

13. Pennant Hills Park

Located in Britannia Street Pennant Hills, this recreational park features netball courts, tennis courts, hockey fields, a football field, soccer field and an archery range. Well worth a look!

14. Koala Park

Popular Koala Park features Australian Native animals and birds and is located on Castle Hill Road West Pennant Hills.

15. Cherrybrook Uniting Church and Cemetery

This small churchyard located on New Line Road provides a valuable record of a close-knit pioneering community since the 19th century.

16. St Judes Church Dural

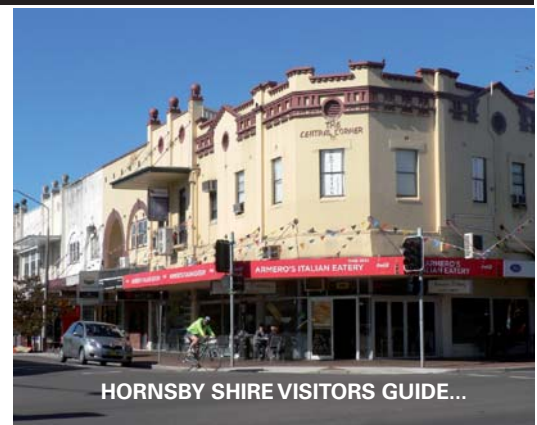
Popular for weddings this picturesque, historic church is located on the corner of Old Northern Road and Galston Road.

17. Galston Gorge Bridges

The Galston Gorge bridges were built to transport produce from the rural area to the railway stations. The larger bridge was replaced by a concrete structure in 1937.

18. Crosslands Recreational Reserve

Crosslands Reserve on Berowra Creek



at its junction with Charltons Creek was named after Burton Crosslands. A popular recreation area. Crosslands is accessed at the end of Somerville Road Hornsby Heights.

19. Fagan Park, Arcadia

The rolling hills of Fagan Park Arcadia was originally an orchard owned and run by the Fagan family. The land was dedicated to Hornsby Council in 1980 as community land. Unique in Australia, the 55 hectares of Fagan Park feature the old period style homestead Netherby Cottage, a working Farm Museum complete with machinery, the Gardens of All Nations and limitless scenic spots for a picnic!

20. Canoelands

North of Forest Glen, an access road from the Old Northern Road runs into a valley north of Marramarra (Mother Mar's) Creek. Here you will find some fairly accessible caves with some of the best preserved Aboriginal paintings in the Shire.

21. Marramarra National Park

Dedicated in 1979, this park consists of approximately 11,500 hectares of bushland situated between Berowra Creek, the Old Northern Road and the Hawkesbury River.



Collingridge – A Man Of Many Talents

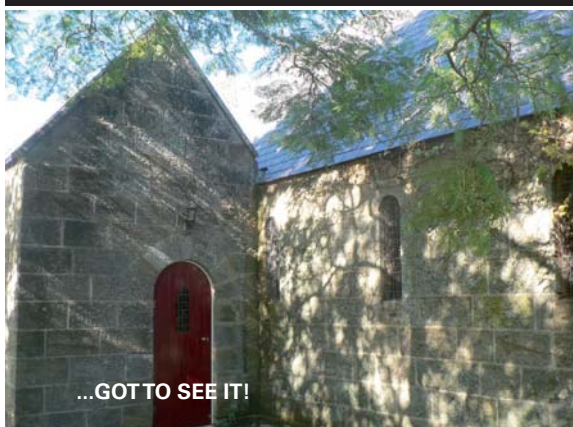
Historic Collingridge Cottage lies in the grounds of Hornsby Hospital in Palmerston Road Hornsby.

The cottage, first called Jave-la-Grande, was originally built for George A. Collingridge, who came to Australia in January 1879 and settled in the Hornsby Shire in 1882.

The cottage was erected in the 1890's from stone quarried on the site of three acres. A studio was incorporated in the original layout of the building and some of the windows which still exist were painted by artist George Collingridge.

George Collingridge was a teacher of oil and water colour painting, wood carving and engraving and pen and ink drawing as well as languages French, Italian, Spanish and Esperanto. He was an artist as well as an engraver, linguist, historian, geographer, author of Discovery of Australia and was Papal Zouave, fighting against Garibalidi 1867-8.

Collingridge was founder of the Royal Art Society of NSW, Honorary Member of Royal Australian Historical Society, founder of the first affiliated Esperanto club in Australia, Knight Commander of the Order of Isabella la Catolica received from the King of Spain in 1917 and Knight Commander of the Order of Santiago received from the King of Portugal; decorated with the Order of St Gregory the Bene Merenti Medal and Mentana Cross.



...GOT TO SEE IT!

