

HORNSBY KU-RING-GAI VISITORS GUIDE

Your Adventure Awaits



Volume 15
July 2023 - June 2024

SYDNEY OYSTER FARM TOURS



Oyster Farm Tour

\$90 per person
(Boat Tour)

- Boat ride to oysters leases
- Guided oyster farm tour
- Learn to open oysters
- Harvest 12 oysters per person



Immerse Yourself Tour

\$195 per person
(Boat Tour & In-Water Dining)

- Boat ride to oysters leases
- Guided oyster farm tour
- Learn to open oysters
- Harvest 18 oysters per person
- In-water oyster tasting with prawns and refreshments
- Waders to wear on the day



Oyster Elegance Tour

\$295 per person
(Boat Tour & Beach Lunch)

- Boat ride to oysters leases
- Guided oyster farm tour
- Learn to open oysters
- Harvest 24 oysters per person
- Gourmet seafood lunch + refreshments on a beach with a breathtaking view

CONTACT US
+61 416 8888 01

PICK UP LOCATION
KANGAROO POINT WHARF 1420
PACIFIC HIGHWAY, BROOKLYN, NSW

Welcome

YOUR ADVENTURE AWAITS

Firstly, we would like to acknowledge the traditional owners of this beautiful region, the Darug and GuriNgai peoples, and would like to pay our respects to Elders past, present and emerging.

Welcome to our 15th Edition of the Hornsby Ku-ring-gai Visitors Guide 2023-2024 which will amaze you with the variety this region has to offer.

Compiled by locals, this guide is packed full of inspirational experiences which will help you plan your valuable recreation time with family and friends.

Whether it is enjoying dining at the river's edge, picking your own fruit at a local orchard, taking the kids to an adventure park or chilling on a rock overlooking our majestic waterways, the Hornsby Ku-ring-gai region can offer this, and so much more.

As you turn the pages, you will discover the key to a land of endless natural beauty. The full edition is also available to read online: www.hkvg.com.au

Start your Adventure now!

Kathie Comb OAM
& the HKVG Team



Contents

- ◆ **Adventure & Recreation** from Page 4
- ◆ **Our Waterways** Page 12-25
- ◆ **National Parks** Page 32-35
- ◆ **Out & About** Page 36-45
- ◆ **Taste** 46-50
- ◆ **Where To Stay** Page 51
- ◆ **Heritage** Page 52-55
- ◆ **Art & Culture** Page 56-59
- ◆ **Local Churches** Page 60
- ◆ **Community Contacts** Page 62
- ◆ **Map of Hornsby Ku-ring-gai areas** Page 63



View down to the winding Hawkesbury River from Marramarra National Park
photo credit John Spencer/DPE



Tree Tops Adventure Park - St Ives

ACKNOWLEDGEMENTS

Appreciation is extended to those who supplied photographs, information and valuable assistance in the production of the Hornsby Ku-ring-gai Visitors Guide. Photos supplied by: Hornsby Shire Council, Ku-ring-gai Council and National Parks & Wildlife Service. Front cover "View from Calabash BayLodge" by Michael Wee c/o Wild Luxury. Back cover: Tree Tops Adventure St Ives.

PUBLISHER'S INFORMATION

The Bushland Shire Telegraph Pty Ltd

ABN: 44 112 549 452

Phone: 02 9457 9201

Mail: PO Box 80 Berowra Heights NSW 2082

Email: info@hkvg.com.au

MANAGING EDITOR & PUBLISHER

Kathie Comb OAM

DESIGN & PRODUCTION

Ashlie Robinson

SALES MANAGER

Christine Nichols: 0415 381 882

ACCOUNTS

Sue Hurdell & Maureen Hayes

PRINTING

IVE Group

www.ivegroup.com.au

WEBSITE

Read online at www.hkvg.com.au

Site provided by www.printernet.com.au

www.facebook.com/HornsbyShireVisitorsGuide

COPYRIGHT

The Hornsby Ku-ring-gai Visitors Guide is published and produced by The Bushland Shire Telegraph Pty Ltd. No part of the Hornsby Ku-ring-gai Visitors Guide may be reproduced in any form without the written consent of the Publisher.

PROMOTE YOUR BUSINESS

Enquire about advertising in the 16th Edition of the Hornsby Ku-ring-gai Visitors Guide (published July 2024).

Sales Manager: Christine Nichols, 0415 381 882

Email: info@hkvg.com.au

Phone: 02 9457 9201

The Hornsby Ku-ring-gai Visitors Guide is an independent magazine designed for visitors and residents of this magnificent region. Enjoy your time here and please remember when you are out and about, let our advertisers know you found them in this publication. It is only with their support that we can continue to bring you this FREE tourist magazine.

Disclaimer: Information supplied by contributors to the Hornsby Ku-ring-gai Visitors Guide is correct at time of publishing and is valid until June 2024*. Although all care has been taken in the production of this Visitors Guide, The Bushland Shire Telegraph Pty Ltd and its production team accept no responsibility for any inaccuracy or errors contained in this publication as a result of information supplied.

*It is advisable to contact the relevant organisation before venturing on the advertised activity to ensure availability.

Adventure and Recreation

With a broad range of activities, local attractions and experiences to satisfy your need for adventure, you will never be lost for something to discover in the Hornsby Ku-ring-gai region.

From exploring the wonders of our national parks, to tantalising your tastebuds with some of our best local oysters, there is so much to discover as you explore the Hornsby Ku-ring-gai region.

Ride a mountain bike, explore scenic trails that lead through our bushland, picnic in family-friendly parks and gardens, visit our galleries and markets and follow an artists' trail, play a round or two of golf, meet the locals at a riverside pub or simply indulge in the tranquillity of the mighty Hawkesbury River on a luxury houseboat.

Tree Tops St Ives

www.treetopsadventure.com.au

Tree Tops high ropes course is located at St Ives Showground, with more than 95 aerial obstacles and 10 ziplines. All are suspended between platforms to create a maze of activities in the treetops. Courses start at 1 metre for little climbers and jump up to 15 metres for bigger adventurers! For more information and to book visit the website.



Climb and fly at Tree Tops Adventure, St Ives



WE ROAST IT • WE DRINK IT • WE SELL WHAT'S LEFT

EST. 1998

SIBONI'S
COFFEE

Roasting quality grade coffee beans in small batches is what we do.
Guiding you on your coffee journey is what we thrive on.

Come in and smell the aroma of coffee freshly roasted on the premises and explore our range of coffee beans, machines, grinders and equipment.

975 Pacific Highway, PYMBLE
(Close to station, parking behind in car park)

Opening Hours
TUESDAY to FRIDAY • 10am ~ 4pm
SATURDAY • 10am ~ 3pm

www.siboniscoffee.com.au
siboni@bigpond.net.au

ROASTED WITH  IN PYMBLE

Wild Luxury

wildluxury.co

Wild Luxury's Calabash Bay Lodge partners with Broken Bay Pearl Farm – Gourmet Pearler's Package.

Wild Luxury's Calabash Bay Lodge is a secluded property on stunning Berowra Waters, only accessible by water. Be escorted across the creek by boat to the modern lodge which has four bedrooms with luxurious linen bedding; an open-plan living area with lounge, dining and fully equipped kitchen; an immensely deep bathtub with sweeping views to match; and specially commissioned artworks. There are also plenty of outside features including a waterside deck with lounges, dining table and barbecue for entertaining, another all-weather deck off the living room, a treetop yoga studio with its own terrace and a private jetty with deep water mooring.

In conjunction with Broken Bay Pearl Farm, Calabash Bay Lodge offers a two-night Gourmet Pearler's Package, including a private cruise up the Hawkesbury River to oyster leases where you'll discover the origins of the Australian pearl with Broken Bay Pearl Farm's expert guides. Enjoy the taste of freshly shucked Sydney Rock oysters until your heart is content, and a grazing lunch from local ingredients. After your return to Calabash Bay Lodge, enjoy a 3-course dinner provided by our private chef.

Pricing starts from \$890 per person Monday to Thursday, and \$925 per person Friday to Sunday, for a minimum 6 guests, maximum 8 guests. All stays also include a bottle of Oakridge sparkling on arrival; exclusive use of Calabash Bay Lodge's guest boat for exploring the river (with a full tank of fuel included) and water toys such as kayaks, paddleboards, a Canadian style double canoe, fishing rods; all the streaming services you might need; and divine Sodashi amenities.

To book, email relax@wildluxury.co or call 1300 086 042. Package inclusions subject to availability.



Gourmet Pearl's Package - photo credit Broken Bay Pearl Farm

www.wildluxury.co
relax@wildluxury.co

@wildluxury__co
1300 086 042

CALABASH BAY LODGE
Berowra Waters, NSW

CRANE LODGE
Palm Beach, NSW



Wild Luxury at Calabash Bay Lodge

Flanked by National Parks and surrounded by ancient sandstone, Calabash Bay Lodge is an exclusive-use private lodge only accessible by water or seaplane, offering the ultimate Wild Luxury experience on the Hawkesbury River.



WILD LUXURY



© Tim Bardsley-Smith
Hornsby Mountain Bike Trail

Hornsby Mountain Bike Trail

off Quarry Road, Hornsby

hornsby.nsw.gov.au/MBT

If you love getting close to nature on your bike, the very popular Hornsby Mountain Bike Trail is the place for you. This single-track mountain bike trail, combining narrow bushland trails and flowing one-metre-wide trails, attracts more than 300 visitors each week.

Whether you're aiming for a technical ride or simply want to release the brakes along the flow trail, you're bound to find what you are looking for.

If you're a competent rider with some off-road experience, you will enjoy the green trails. More experienced? Relish the challenge of the more difficult, black sections. While fun is the name of the game, caution should be taken on all the trails.

The trail is closed during fire danger periods and after heavy rain to let it dry out. Currently, some sections of the trail network are temporarily closed due to the Hornsby Park re-development. Check the trail status on Twitter (@HornsbyMBT).



Montview Park BMX Track

Montview Parade, Hornsby Heights

hornsby.nsw.gov.au/bmx

If you prefer stunts and tricks to bush-bashing, check out Hornsby Shire's Montview Park BMX track where you can learn to ride and practise your skills.

Montview Park BMX track has dirt jumps, a roll-in mound and a pump track!

The use of protective safety equipment, such as helmets and knee and elbow pads, is strongly recommended.

The BMX track lies along the side furthest from the road. Have fun!

Ku-ring-gai Mountain Bike Trails

krg.nsw.gov.au/mountainbiking

Ku-ring-gai has mountain biking trails for a wide variety of skill levels. There are two purpose-built facilities and trails in the Garigal National Park, Lane Cove National Park and Ku-ring-gai Chase National Park. So get out there and enjoy the amazing rides on offer!

Warrimoo Mountain Bike Trail

This trail in St Ives is a double-black diamond rated downhill and accompanying uphill experience set within incredible bushland. Designed and built with the input of local riders, it's a world-class trail providing insights into the natural environment and indigenous heritage of the area.

Jubes Mountain Bike Track

The track in Wahroonga has three distinct areas for riding, ranging from easy through to very challenging. Jubes was recently upgraded by professional track builders to create a modern and interesting experience for riders.

Volunteer to look after the trails and surrounding environment through the Trailcare program. Visit www.krg.nsw.gov.au/mountain-biking for more information on trails and volunteering.

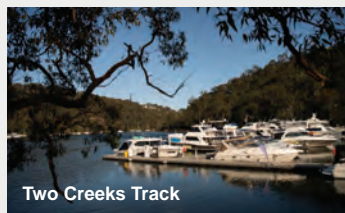
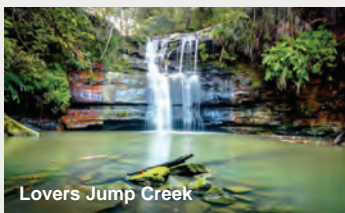


Mountain biking in Ku-ring-gai

If you're looking for an adrenaline packed adventure then come to Ku-ring-gai to experience some world class trails.

Take in the sights and sounds of nature as you cycle down challenging hills and through exhilarating jumps.

If you're ready to take your cycling adventures to the next level visit krg.nsw.gov.au/mountainbiking



Ku-ring-gai bushwalks

Discover hidden valleys, cascading waterfalls and breathtaking lookouts. With options ranging from easy strolls to challenging hikes, there's something for everyone in Ku-ring-gai's natural wonderland!

Find out more at krg.nsw.gov.au/bushwalks





Blue Gum Walk

Blue Gum Walk, Hornsby

Entry from Rosemead Road Park (corner of Rosemead Road and Lockinvar Place)

hornsby.nsw.gov.au/bluegumwalk

From tall, lush forest to rugged sandstone ridgetops, head to the Blue Gum Walk for diverse bushwalking experiences.

New to bushwalking or simply looking for a shorter walk? The walk to the Fishponds and the Ginger Meggs Loop sections are ideal!

For those who want a more challenging loop, experience the two-and-a-half-hour Blue Gum Walk, taking its name from the dominant tree in this area, the Sydney Blue Gum. With its smooth slate-grey bark and rough, brown 'sock', it forms part of an extremely rare ecological community known as Blue Gum Diatreme Forest, now thought to be only located in Hornsby Shire!

Take in lovely views of Berowra Valley extending to the north and Joe's Mountain to the east.

Carrs Bush Discovery Walk

Fagan Park, Galston

discoverhornsby.com/walking/carrs-bush

If you're new to bushwalking, Carrs Bush is the perfect place to explore Hornsby Shire's beautiful environment. The Carrs Bush Discovery Walk is a delightful 250m raised boardwalk loop, interspersed with cute signage about the animals and plants found in this extremely rare tract of Sydney Turpentine Ironbark Forest. Beginning at the Carrs Bush Playground, this walk is wheelchair and pram friendly.

Mambara Walk

Entry from Britannia Street, Pennant Hills

discoverhornsby.com/walking/mambara-walk

Enjoy an easy introduction to the beautiful bushland of Pennant Hills on this wheelchair and pram-friendly 30-minute walk.

Stop and listen to the many bird calls, take in bushland smells, touch bark, leaves and rocks, and observe spectacular wildflower displays. Look out for significant Aboriginal sites and objects including rock engravings, middens, scar trees and artefacts.

Interpretive signage along the way will help you discover features of interest and show you how to interact with this exquisite, inspiring landscape.



Carrs Bush Discovery Walk



Pyes Creek Elevated Elevated Walkway

Pyes Creek Elevated Walkway

Fallon Creek Reserve,
Dural through to Keighran Place,
Cherrybrook

hornsby.nsw.gov.au

There is an impressive new bushwalk recently completed by Hornsby Council that also provides an important pedestrian link between Dural with Cherrybrook, via a magnificent steel swing bridge over Pyes Creek.

This Pyes Creek Elevated Walkway project was funded through a NSW Government grant via the Public Spaces Legacy Program.

The low-profile single span swing bridge for pedestrians connects with new walking tracks that include sandstone and raised platforms in Pyes Creek Bushland and has created an adventurous treetop walk overlooking the picturesque Pyes Creek below.

Mangrove Walk, Brooklyn

Entry from Brooklyn Park, Brooklyn Road

hornsby.nsw.gov.au/mangrovetalk

Take it easy on this scenic wheelchair and pram-friendly 15-minute bushwalk and discover a section of the Hawkesbury River and foreshore not known to many people. Begin in Brooklyn Park, off Brooklyn Road, and meander through mangroves and estuarine habitats, past rare Swamp Mahogany and Broad-leaf Paperbark trees, which were once common in Sydney. As you carry on along the boardwalk across mud flats, watch in wonder as the scene comes alive with tiny crabs scurrying out of holes at low tide. Discover the long history of the oyster industry in Brooklyn as you observe oyster leases from a lookout platform.

See if you can spot the park's Glossy Black Cockatoos who visit regularly! After your walk, sit back, relax and enjoy a picnic or barbeque at the park facilities. For those who want some action, there's even a skateboard ramp next to the nearby oval.



Gibberagong Walking Track - photo by Andrew Richards/DPE

Gibberagong Walking Track

Wahroonga to Bobbin Head

nationalparks.nsw.gov.au

This track starts in Grosvenor Street Wahroonga and ends in Bobbin Head. It's a challenging walk that's suitable for experienced hikers with a good level of fitness.

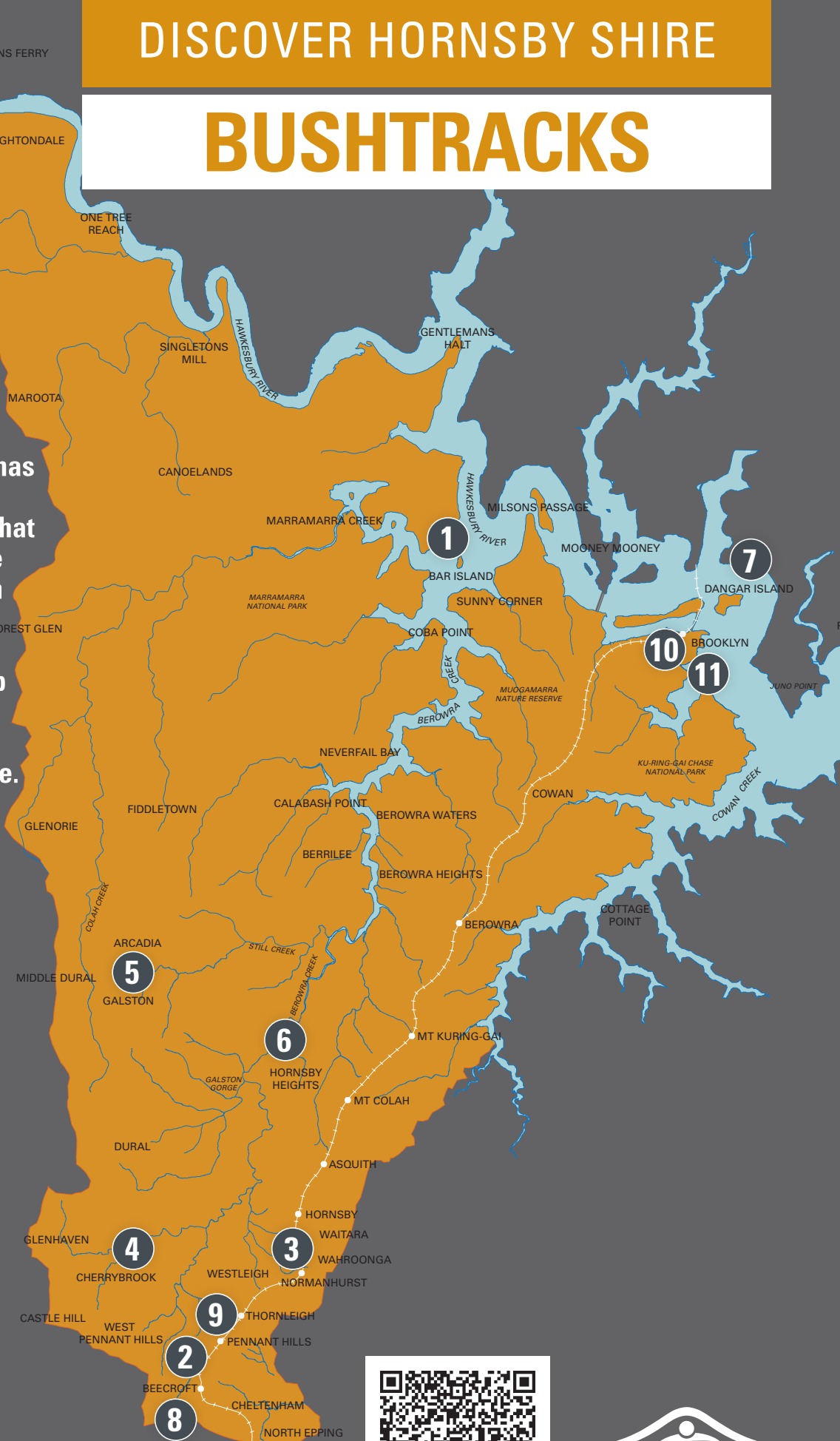
The walk takes you through dense bushland and over Cockle Creek, with expansive views of Ku-ring-gai Chase National Park and the chance to spot native wildlife such as wallabies, goannas and lyrebirds. For more info visit the National Parks website.

DISCOVER HORNSBY SHIRE

BUSHTRACKS

Surrounded by two expansive National Parks, Hornsby Shire offers numerous bush walking tracks to connect to nature and the pristine natural environment. Hornsby Shire Council has developed several self-guided walking maps, that cover the entirety of the Shire. Choose your own destination, pack a bite to eat and drink and download your map to begin your exploration of the beautiful bushland Shire.

- 1. BAR ISLAND WALK**
Bar Island
- 2. BEECROFT-CHELtenham LINK TRACK**
Beecroft/Cheltenham
- 3. BLUE GUM WALK**
Hornsby
- 4. CALLICOMA WALK**
Cherrybrook
- 5. CARRS BUSH WALK**
Galston
- 6. CROSSLANDS SALT MARSH WALK**
Hornsby Heights
- 7. DANGAR ISLAND WALK**
Dangar Island
- 8. PIONEERS' HERITAGE TRAIL**
Epping/Beecroft/Cheltenham
- 9. MAMBARA WALK**
Pennant Hills (wheelchair/
pram-friendly)
- 10. MANGROVE WALK**
Brooklyn (wheelchair/
pram-friendly)
- 11. McKELL PARK WALK**
Brooklyn



To learn more, scan the QR code or visit

hornsby.nsw.gov.au/bushtracks



Browns Trail, Ku-ring-gai Wildflower Garden Walk

Ku-ring-gai Wildflower Garden Walks

420 Mona Vale Rd. St Ives

krg.nsw.gov.au/wfg

The Ku-ring-gai Wildflower Garden at St Ives is home to thousands of beautiful native plants and wildflowers spread across 123 hectares of bushland. The Garden is open to the public for bushwalks, picnics and sightseeing.

There's a range of fantastic bush walks from leisurely pathways and short walking tracks to steep and rocky wilderness trails. Depending on the walk you choose you'll see forests, native birds and animals, sandstone outcrops and waterfalls. For more information head to the website. Open daily between 9am - 5pm: entry is free

Two Creeks Track

krg.nsw.gov.au/Things-to-do/Bushwalking-tracks/Two-Creeks-Track

The Two Creeks track is around 7.5kms long and spans the suburbs of Lindfield and Roseville, beginning at Lindfield Oval or Tryon Road and finishing at the Roseville Bridge.

A favourite for hikers, the track is renowned for its sweeping views of the Middle Harbour foreshore with challenging sections along the way. Other highlights of the track include indigenous rock art sites, the endangered Coachwood Forest and post-war stonework.



Bushwalking in the local national parks and reserves is the best way to commune with the natural environment. Follow these simple guidelines to ensure your best experience.

- Keep to the track to minimise impact
- Take all your rubbish home with you or use bins provided to help protect our pristine environment
- Notify someone of your route and estimated time of return
- Take plenty of drinking water
- Pets must be leashed at all times, unless in a leash free area (pets are not permitted in National Parks)
- On Total Fire Ban (TOBAN) days, walking in bushland is not recommended. Check here: www.rfs.nsw.gov.au
- All fauna, flora and any natural or cultural features are protected and should not be removed or defaced
- For further information and track maps visit www.kmc.nsw.gov.au/bushwalkingtracks or www.hornsby.nsw.gov.au/environment/flora-and-fauna/bushland-management/bushtracks

Our Waterways

Pristine waterways abound in the Hornsby Ku-ring-gai region. No matter where you are in the region, the river's edge is always just a short drive away.

The river communities of Brooklyn, Berowra Waters, Mooney Mooney, Wisemans Ferry and Spencer are unique places to visit and many offer kayaking, fishing, BBQ boat and houseboat hire as well as cruises, tours and heritage pubs.



Cruise the pristine waters of Ku-ring-gai Chase National Park, enjoy the serenity of Berowra Creek or the majesty of the historic Hawkesbury River on board one of our well appointed houseboats. We have a range of cruisers and houseboats that accommodate from 2 to 12.

**Call in and inspect our fleet or visit us online.
Alternatively call our friendly office staff
to arrange your booking.**

Hiring a houseboat – its an unforgettable experience!

Phone (02) 9985 5555
www.holidaysafloat.com.au
87 Brooklyn Road, Brooklyn NSW 2083



HAWKESBURY WATER TAXI

0422 300 100



www.hawkesburywatertaxi.com.au
hawkesburywatertaxi@gmail.com
Bookings Preferred

Fast ~ Convenient ~ Reliable ~ Affordable

Our 17-seat water taxi and 6-seat self drive runabouts, are the perfect way to travel the beautiful Hawkesbury River.



The iconic Hawkesbury mailboat, The Riverboat Postman, invites you to join the postie for a lighthearted look at the magnificent Hawkesbury River and its more isolated residents on the daily mail run for Australia Post. Enjoy entertaining and informative commentary from our local skippers, and great service from our fabulous crew on this 3 hour cruise up the river. Check us out on TripAdvisor!

The Postman departs daily every weekday (Monday to Friday) except Public Holidays from the Mail Shed at Brooklyn at 10am, right beside the Hawkesbury River Train Station. BOOKINGS ARE ESSENTIAL as the boat is often full

This is the last remaining mail boat in operation in Australia, and the journey offers a true "step back in time" experience with its old-school snail-mail delivery service to locals (and their dogs) who come to meet us on the wharves.

\$64 (adult) - \$54 (seniors) - \$20 (kids 4-14) includes morning tea and delicious Ploughman's Lunch served on board.
* Prices valid to December 2023

Groups always welcome: No minimum numbers required but bookings are essential.

**Just
\$64/\$20
adults kids**

For more information,
or to book, call

0400 600 111

or book online at:
www.riverboatpostman.com.au



Boating Reimagined - Freedom Boat Club

Boating Reimagined

freedomboatclub.au

Freedom Boat Club brings the benefits of a global boating lifestyle to Bobbin Head - with none of the hassle.

For many years Bobbin Head has been associated with people going boating for the first time and holding those memories forever. That tradition is about to be reimagined.

Opening in July 2023, Freedom Boat Club Bobbin Head will provide direct access to our picturesque waterways. A selection of boats, all around 24ft long, will deliver members a variety of on-water experiences to suit their needs. In addition to Bobbin Head, Freedom Boat Club will open at Pittwater, Lake Macquarie and Sydney Harbour. Members will have access to any of Freedom’s 380+ locations worldwide.

The driving force behind EMG Boat Clubs, Nicky Vaux, said, “Our passion is helping people access the boating lifestyle, and Freedom Boat Club is a world leader in this regard. With full member training, access to boats in incredible locations and affordable, flexible memberships Freedom really is boating reimagined.”

Nicky also delivers a successful boating podcast as the Boat Princess.

Freedom Boat Club is part of the Brunswick family which also includes such prestigious boat brands like Sea Ray, Boston Whaler, Trophy and Arvor.

Membership to the world’s largest boat club is easy - a simple one-time entry fee and low monthly payment grants members unlimited boating and a truly stress-free boating lifestyle. Freedom Boat Club takes care of everything. Members simply book online, and their boat will be waiting at the marina, fuelled and ready for adventure. Interested to learn more?

Contact the friendly Freedom Boat Club team at the marina at Bobbin Head. Tel: 02 9457 2000 Email: curious@freedomboatclub.com

DISCOVER HORNSBY SHIRE

WATERWAYS

BAR ISLAND

Rich in Aboriginal and European history, this uninhabited island makes for an interesting and worthwhile day trip. Accessible only by boat, Bar Island is located off Fishermans Point at the mouth of Berowra Creek and the Marramarra Creek, at their junction with the Hawkesbury River. As a location of profound cultural significance, its location suggests it may have once served as a place of meeting and shared resource for the Darug, Guringai and Darkinjung language groups. Among the historic sites is a large midden to the north of the island, as well as relics of a church, cemetery, cottage and jetty.

BEROWRA WATERS

Berowra Waters is among Hornsby Shire's most beautiful (and hidden away) areas, perfect for anyone who wants to escape the rush of everyday life. Surrounded by stunning Berowra Valley National Park, the region has beautiful natural scenery to enjoy, a range of bushwalks, great spots to go fishing and many other attractions. It is ideally situated for easy boating access to many waterways including Berowra Creek, Pittwater, Cowan Creek and the Hawkesbury.

BROOKLYN

Brooklyn is one of the iconic, unique suburbs in Sydney with a combination of fabulous waterside views and charming local culture and eateries. One of the highlights is McKell Park, which overlooks the Hawkesbury River and has picnic shelters, electric barbeques and a children's playground. There are several beautiful bush walks including the Brooklyn to Cowan section of the Great North Walk, an ocean pool for a quick dip or take a trip on the iconic Riverboat Postman and visit the boat access only islands of the Hawkesbury.

CROSSLANDS

As part of the stunning Crossland Reserve, set in the Berowra Valley National Park, the Crosslands swimming hole is a tidal, sand-bottomed stretch of river on Berowra Creek, on the upper reaches of the Hawkesbury Inlet. Grab your kayak and enjoy a picnic on the side of the river with a game of cricket, or even camp overnight. A perfect destination for all of the family.

DANGAR ISLAND

Dangar Island is rich in indigenous, colonial and natural history. Home to several hundred residents, it is one of the few Sydney suburbs without cars. Beautiful parklands, beaches, natural bushland and spectacular scenery make this a unique and fun day out. Take a stroll around the island, visit Kiparra Park, where there is still evidence of Aboriginal habitation such as rock shelters, and have a picnic at the glorious Bradleys Beach or in the centre of the island next to the Bowling Club. Ferries to Dangar Island leave from the Brooklyn wharf, and water taxis are also available.

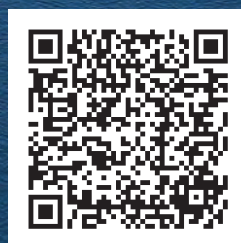
WISEMAN'S FERRY

The Wisemans Ferry settlement is located in the heart of the Hawkesbury River, surrounded by beautiful national parks. With a combination of indigenous and colonial history including 16 kilometres of the convict built Old Great North Road, Wisemans Ferry Park is a superb location for picnics, with electric barbeques, children's playground, walking tracks, public toilets, kiosk and an on-leash dog area. The area is a favourite for water skiing, fishing and bushwalking. Two vehicle ferry services cross the river and there is a public boat ramp.

Looking down Berowra Waters to the south

To learn more, scan the QR code or visit

hornsby.nsw.gov.au/waterways





BBQ BOAT HIRE

BEROWRA WATERS



www.bbqboathireberowrawaters.com.au



Luxury BBQ boats
No licence required
Local independent business
Convenient pick up locations

PH: 0459 143 251



website



SAFETY on the water

MarineRescue App

Increasing traffic on NSW waterways means an increased need for boaters to take safety precautions out on the water.



The MarineRescue App makes it easier than ever for boaters to stay safe on NSW waters. It's the only App that connects you directly to Marine Rescue NSW.

In just a few short minutes, you can Log-on with the Marine Rescue NSW app and be on your way, knowing that there are more than 3,000 professionally trained and equipped search and rescue experts watching out for you.

When you Log-on, Marine Rescue knows where you're heading and when you're planning to return, so they can quickly start a search if you're not safely back to shore when expected.

The MarineRescue App is free to download and use and is suitable for both Apple and Android mobile devices. The App also offers you with an extra live safety tracking option, automatically updating your position on the water every 30 minutes so Marine Rescue can track your journey.

The App also provides a range of valuable safety tools and information that could help save lives in an emergency:

- Local tide, weather and sea conditions
- Your latitude/longitude position coordinates
- Boat ramp locations and popular fishing spots
- A safety checklist
- Emergency call procedures
- Information on Marine Rescue NSW

The App is a great addition to your marine radio and EPIRB in your safety toolkit. But remember, it doesn't replace these items and you should always ensure you are carrying all required equipment to immediately summon help in an emergency situation out on the water. Additionally, remember that whenever you are heading out on the water, make sure everyone on board is wearing a lifejacket.



Marine Rescue on the Hawkesbury

Boat Ramps

Apple Tree Bay
Mt Colah

Berowra Waters Public Dock
Berowra Waters

Davidson Park
Killarney Heights

Deerubban
Mooney Mooney

McKell Park
Parsley Bay

Wisemans Ferry Public Wharf
Wisemans Ferry

CATCH A FERRY AT CHURCH POINT TODAY!

Enjoy beautiful Pittwater from the ferry, or get off on Scotland Island or the western foreshore of Kuring Gai Chase National Park.

FERRY DEPARTS hourly
on the half hour from
9.30am-6.30pm

PRICES
\$17.00 return
\$11.00 concessions/senior
Kids under 5 are free



CHARTERS AVAILABLE
SEE OUR WEBSITE FOR PRICES

Find us on **f**
Ph 0433 038 408

info@churchpointferryservice.com



**CHURCH POINT
FERRY SERVICE**

churchpointferryservice.com

THE FLOATING OYSTER

Wine Bar

Group Charters & Public Cruises

www.thefloatingoyster.com phone 0408 688 084

LUXURY SCENIC CRUISING ON THE HAWKESBURY — BROOKLYN

VISIT

HORNSBY AQUATIC LEISURE CENTRE

- Heated eight lane 50 metre outdoor pool for recreational and lap swimming
- Heated 25 metre indoor pool for learn-to-swim activities
- Heated leisure pool with zero depth entry leading into a walking zone
- Fun water features for the children in the leisure pool
- Enclosed water slide for children
- Modern gymnasium
- Multi purpose room for fitness classes and recreation activities
- Parking on site for 100 vehicles
- Lifts to all levels of the complex for people with access needs

FITNESS/
RECREATIONAL
ACTIVITIES
AVAILABLE
AT BOTH
FACILITIES



AQUAFUN SWIM SCHOOL

- Operates each school term. Holiday intensives are also available.
- Squad program featuring both competitive and fun + fitness classes for children and adults.
- Aqua Aerobics classes.

ENTRY REQUIREMENTS

Children who are not toilet trained must wear swimming nappies. Children under the age of 13 must be accompanied and supervised by a person over the age of 16.



LOCATION

Hornsby Aquatic and Leisure Centre is located at 203 Peats Ferry Road, Hornsby, opposite the police station. This is on the west side of the CBD and is a level 5 min walk from Hornsby rail and bus interchange.

CONTACT US

To contact Hornsby Aquatic call 9847 6300 during opening hours. For entry fee information visit Hornsby Council's website:

hornsby.nsw.gov.au/hornsbyaquatic.



Berowra Waters

discoverhornsby.com/waterways/berowra-waters

Berowra Waters is one of Hornsby Shire's most beautiful (and hidden) locations, perfect for anyone who wants to escape the rush of everyday life.

Surrounded by stunning Berowra Valley National Park, the region has beautiful natural scenery to enjoy, a range of bushwalks, great spots to go fishing, boating, kayaking and many other attractions.

Boats and kayaks can be hired from the Berowra Waters Marina. Explore the many tributaries, creeks and inlets nearby.

The plentiful parks and reserves are great for picnics, family 'get togethers', celebrations and barbecues.

Picnic shelters and playgrounds are plentiful. There are excellent nearby waterfront and al fresco cafes and restaurants, too!

This area is popular with hikers and is part of The Great North Walk which runs through Berowra Waters.



**COMPLETE
PROPERTY AGENCY**

Ph: 9199 9616
Office location: Berowra Waters Marina
199 Bay Rd Berowra Waters

LOCAL BOUTIQUE REAL ESTATE AGENCY

Waterfront real estate power team servicing the Hawkesbury River from Berowra Waters to Brooklyn including:

- Milsons Passage
- Coba & Bar Point
- Little Wobby
- Marra Marra
- Dangar Island

ratemyagent

"..definitely got the magic touch"
Vendor-57 Coba Point Berowra Waters

"..frictionless and hassle free, and sold off market"
Vendor-2 Collingridge Pt Berowra Waters



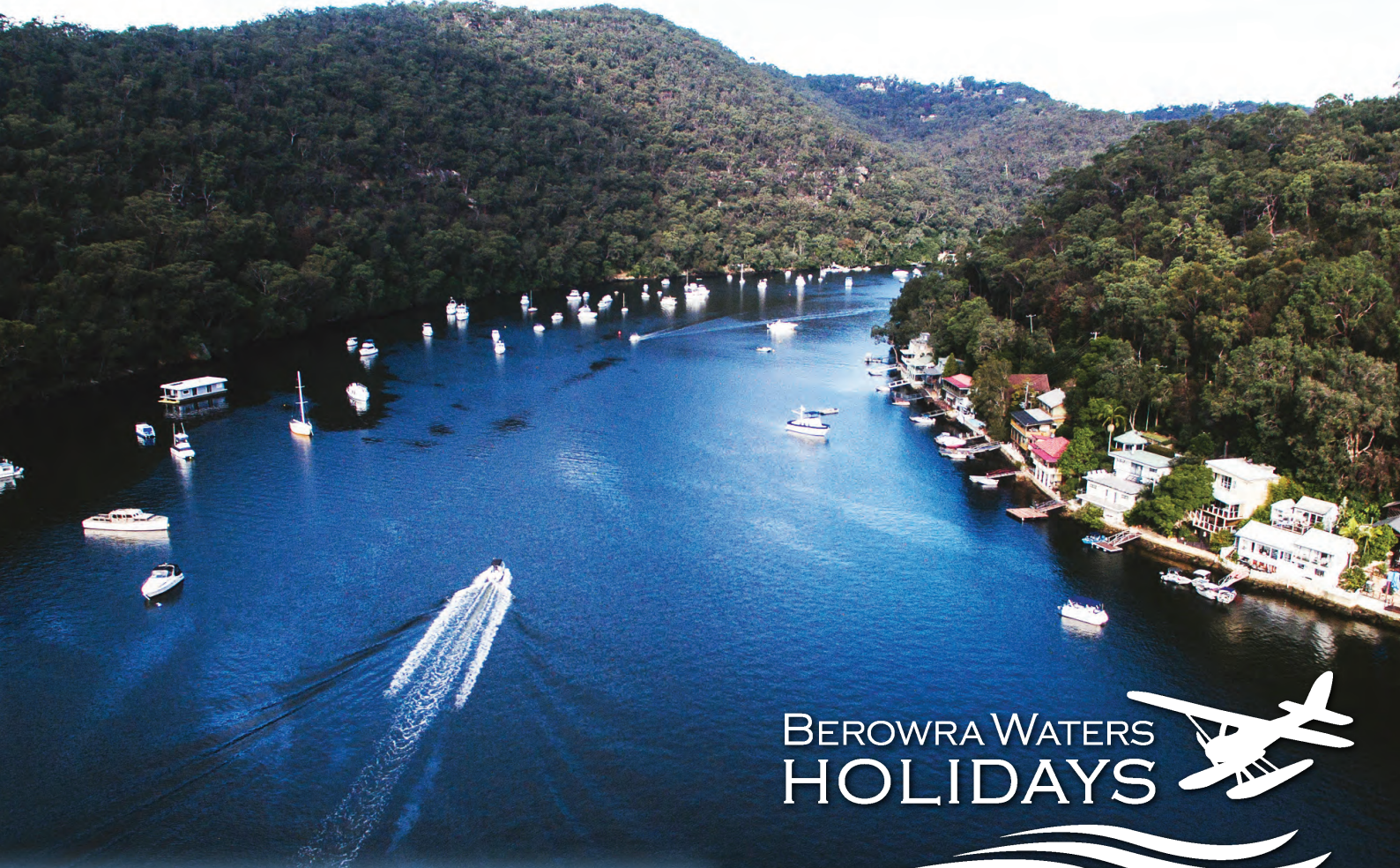
Sue
m| 0405 565 256



Treena
m| 0400 689 468

www.completepropertyagency.com.au

Berowra Waters is one of the most beautiful and scenic waterways right on your doorstep



BEROWRA WATERS HOLIDAYS



*Sydney's
best kept secret*

ACCOMMODATION

Unique water access only properties for an amazing holiday for couples, friends & families



BOAT HIRE

No licence required.
BBQ Boats, Polycraft,
Tinnies, Kayaks



RESTAURANT, CAFES & DINING

Complete waterfront Fine Dining at its best or just fish & chips by the water



199 Bay Road, Berowra Waters
Berowra Waters Boat Hire (02) 9456 7000
Berowra Waters Accommodation 0405 565 256
www.berowrawatersholidays.com.au

Berowra Waters Holidays

berowrawatersholidays.com.au

Come for the day, stay for the weekend!

Berowra Waters is the perfect place for a day out or a Sydney weekend getaway.

Berowra Waters offers visitors a choice of unique river accommodation for couples, families and groups, casual & fine dining plus a huge range of activities both guided and unguided. These activities range from kayaking, stand up paddle boarding, boat hire, water skiing, fishing, hiking, cruising, historical & cultural walks and more, making this a wonderful place to visit and so close to Sydney.

Berowra Waters Boat Hire offers boats and kayaks for hire, no boat licence is required, however there are boats available for licenced holders wishing to go skiing, tubing or fishing further down the river.

Contact Berowra Waters Boat Hire via the website, or phone (02) 9456 7000.

Berowra Waters Holidays offers amazing accommodation right on the river. Your unique water access only accommodation comes complete with kayaks, fishing rods and motorised tinny to explore the river.

Visit for the day, stay the weekend or book for an extended holiday! Berowra Waters Holidays can arrange everything for your next holiday. Contact Berowra Waters Holidays 0405 565 256.



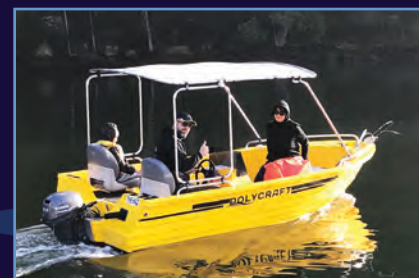
Berowra Waters Holidays - Beach Picnic



Berowra Waters Boat Hire

Berowra Waters Boat Hire located at the Berowra Waters Marina, offers a range of boats suitable for people without a boat licence who wish to explore the waterways and get out on the water, through to boat licence holders wishing to rent a more powerful boat to go fishing further afield or water skiing with friends.

- > *Basic tinny - tiller steer*
- > *Blue Polycraft - tiller steer*
- > *Yellow Dory - steering wheel*
- > *BBQ Boats - no licence required*
- > *Boab Boats - boat licence required*
 - *Sportsriders 100hp*
 - *Runabout - 60hp*
 - *Kakadu - 40hp tiller steer*



Ph: 9456 7000

www.berowrawatersboathire.com.au

Wisemans Ferry

Wisemans Ferry on the Hawkesbury River is one of New South Wales' best-kept secrets. The charming village is home to a brand new three-lane boat ramp – the perfect jumping off location for a day spent on the water. Facilities at the Wisemans Ferry boat ramp also include a pontoon, new amenities and plenty of parking for cars and trailers.

Located next to the boat ramp, the Wisemans Ferry Park is rejuvenated, having been damaged during the storms of 2022. A new playground is now available for children, and you can have a knock about on the new tennis court, hang out on the newly turfed Village Green or walk on the new walking paths around the park. Enjoy a stroll on the mangrove walk along the waterfront to observe the natural vegetation of the area and spot the famous Wisemans Ferry transporting cars from one side of the river to the other.



New Playground - Wisemans Ferry



Boat Ramp & Pontoon



WISEMANS FERRY
GROCEr
2775
and cafe

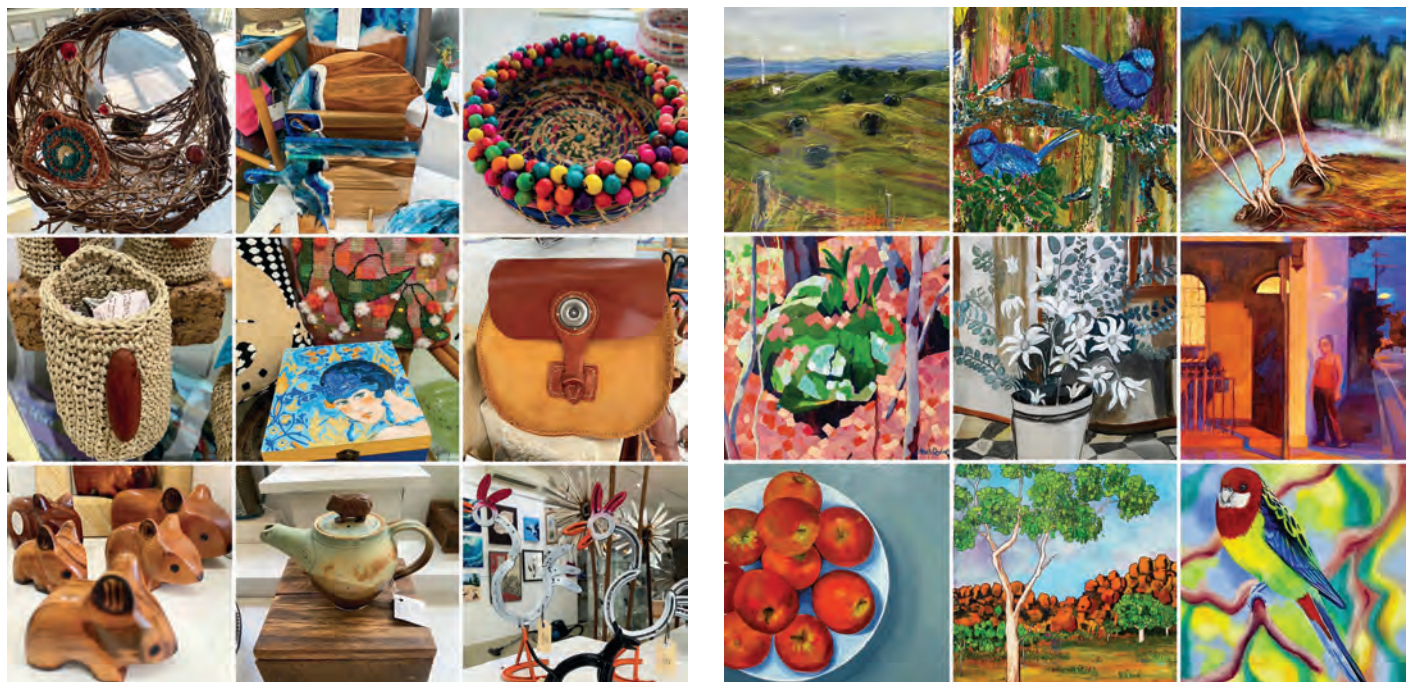
- ◆ Top quality "Toby's Estate Coffee"
- ◆ Bread & Milk
- ◆ Pies, homemade sausage & vegie rolls
- ◆ Seasonal Fruit & Veg
- ◆ Freshly made sandwiches & wraps
- ◆ Delicatessen
- ◆ Large variety of grocery products
- ◆ Butcher quality meats
- ◆ Gluten Free products available
- ◆ Slushies
- ◆ Newspapers, magazines & gift cards
- ◆ ICE, ATM, Bait

5557 Old Northern Rd, Wisemans Ferry
02 4566 4612
OPEN 7 DAYS – 6AM TO 7PM

The Ferry Artists www.ferryartists.org

The Ferry Artists is a not for profit community gallery showcasing the talented local artists of Wisemans Ferry and the Forgotten Valley. The Ferry Artists are currently in their 22nd year of business supporting local artists and bringing beautiful artworks and craft works to visitors to Wisemans Ferry.

On any visit you can find a great range of quality unique and handcrafted gifts and beautiful artworks for sale. The Ferry Artists Gallery is open daily from 10am to 4pm. So make the Ferry Artists a stop on your journey around our valleys!





Looking for a sea change
or a holiday hideaway?

The Hawkesbury River is calling YOU!



*Imagine waking up to
THIS every day!*

Ready to escape the hustle and bustle and secure your own slice of paradise? We've got you covered...

Delight in the taste of fresh seafood, majestic water views and charming local culture - all right here on the River.

We know the River... Let us show you around!



Caelia Collins

m. 0439 647 777

e. sales@riverfront.com.au



Scan this QR
Code to tell us
what you are
looking for

02 9985 7611

2/5 Bridge Street, Brooklyn
www.riverfront.com.au

Hawkesbury River Communities

Brooklyn

discoverhornsby.com/waterways/brooklyn/

Brooklyn is one of the iconic suburbs of Hornsby Shire with a combination of fabulous waterside views and charming local culture and eateries. One highlight is Upper McKell Park which features panoramic views over the magnificent Hawkesbury River.

There are picnic shelters, barbecues, a children's playground and the Federation Walk that passes through gorgeous bushland.

The tidal pool off Karoola Street is a brilliant way to cool off on a hot day. It has a little sandy beach which is perfect for kids. It is surrounded by a boardwalk (take care jumping in!). There are tables nearby. Bring some sunshade if you can.

Brooklyn Ferry Service operates two beautifully restored historic vessels that ply the river between Brooklyn, Dangar Island and Little Wobby Beach



Oyster shells on the banks of the Hawkesbury

Bar Island

discoverhornsby.com/waterways/bar-island/

Bar Island is located where Berowra Creek joins the Hawkesbury River.

Rich in First Nations and Colonial history, this now uninhabited island is well worth a visit. Among the historic sites are a cottage, the crumbling remnants of a ruined church and cemetery, as well as Aboriginal middens. Evidence of First Nations occupation can still be seen in a large shell midden at the northern most point of the island. Enjoy the plants and animals, making sure to keep an eye out for the rare Glossy Black Cockatoo and Whistling Kite.

Access to the island is by boat only, but only a short trip from Brooklyn.

Dangar Island

hornsby.nsw.gov.au/dangarwalk

Dangar Island is rich in First Nations, Colonial and natural history. Though home to a village of over 250 people, it is one of the few Sydney suburbs without cars!

Dangar Island boasts pleasant parklands, beaches, natural bushland and spectacular views of the Hawkesbury River. The huge native trees along Grantham Street, called Blackbutts (*Eucalyptus pilularis*) are heritage listed. Some specimens are possibly centuries old and may have been saplings when Governor Arthur Phillip first landed on the island in 1788.

Seagrasses grow in the sheltered and shallow waters of estuaries. They are valuable fish habitats and are often referred to as the 'nurseries of the ocean'. You can get to Dangar Island by ferry, water taxi or (like Governor Phillip) private boat.

The Cottage at Brooklyn

brooklyncommunity.org.au/

The Cottage is a joint initiative of the Brooklyn Community Association and Hornsby Council. It offers visitors a glimpse into Brooklyn and our river communities.

The Cottage building is about 100 years old, and has been a home, an art gallery, and even a local community radio station.

The Cottage is open on Saturdays and Sundays throughout the year. Entry is free. Visitors to The Cottage can find local information, history, an RSL display, creative workshops and markets, all run by our enthusiastic volunteers.

With many artists living around the beautiful Hawkesbury River, The Cottage offers new art exhibitions every 6 weeks. Weekly, you'll find The Cottage door open to the craft circle and Sunday morning meditation.

The Cottage markets are held twice yearly with an abundance of local produce and artisan goods for you to choose from. Creative workshops, book club and other events are run throughout the year. Check the website or Facebook page for what's on each month, or contact us.

<https://www.facebook.com/CottageBrooklyn>

thecottage@brooklyncommunity.org.au



The Cottage at Brooklyn





Parks, Playgrounds & Reserves

Looking for a family-friendly park? You are spoilt for choice in the Hornsby Ku-ring-gai region which offers parks with playgrounds, picnic facilities, natural walks and gloriously colourful gardens. Discover your favourite park today!

Warrina Street Oval Playground

Hillcrest Road, Berowra

Spend a few hours at this popular playground in Berowra complete with play equipment, shade sails, barbeque and picnic settings. You will find accessible play equipment for all ages including in ground trampolines, rock bouldering, a circuit track that's perfect for scooters and a dedicated water play area. For those wishing to explore beyond the playground there is a pedestrian circuit path around the oval with fitness equipment pods along the way.



Appletree Park Playground

Kangra Crescent, Cherrybrook

Bring the children to enjoy the Appletree Park play space, located within a newly planted grove of trees in a large grassy parkland. Play equipment includes a multi-play climbing unit, swings, rocker and log play area. Enjoy a picnic under the covered picnic shelter, relax on one of the seated areas and let the kids run around on the large grassy open space.



The Lakes of Cherrybrook

Cnr Shepherds Drive and Macquarie Drive, Cherrybrook

Have fun at this fenced playground located next to the lakes with barbeques and picnic shelters. The recently upgraded playground features a new run-around nature play area with a large frog for children to 'hop' into the boat overlooking the lake. There's plenty of informal seating to sit and enjoy the beauty of the site. Take a short bushwalk in the surrounding trails and spot water birds from one of the viewing platforms.

McKell Park Playground

12 Dangar Road, Brooklyn

Visit scenic Brooklyn to have fun at this charming, fenced playground situated on the water, next to Brooklyn Baths. Kids can play on a variety of play equipment. Cook a barbeque or enjoy a picnic at one of the tables. Take a walk on one of the walking trails along the water.



Ruddock Park Playground

Coral Avenue, Westleigh

Visit this large park to enjoy a variety of play equipment including slides, climbing structure, a wooden boat to play on and swings. Following recent upgrades, the park now boasts a basketball half court, improved seating and picnic shelters, an outdoor gym and a learn-to-ride play area. Plus, there's a large grass slope to roll down!

North Turramurra Recreation Area

Bobbin Head Road, North Turramurra

At the end of Bobbin Head Road, North Turramurra you'll find a championship 18 hole public golf course with spectacular views over Ku-ring-gai National Park. There are also cricket and soccer fields and a series of walking trails through wetlands.

The North Turramurra Recreation Area is open to the public daily with free parking on site. For golf bookings call 9144 5110.

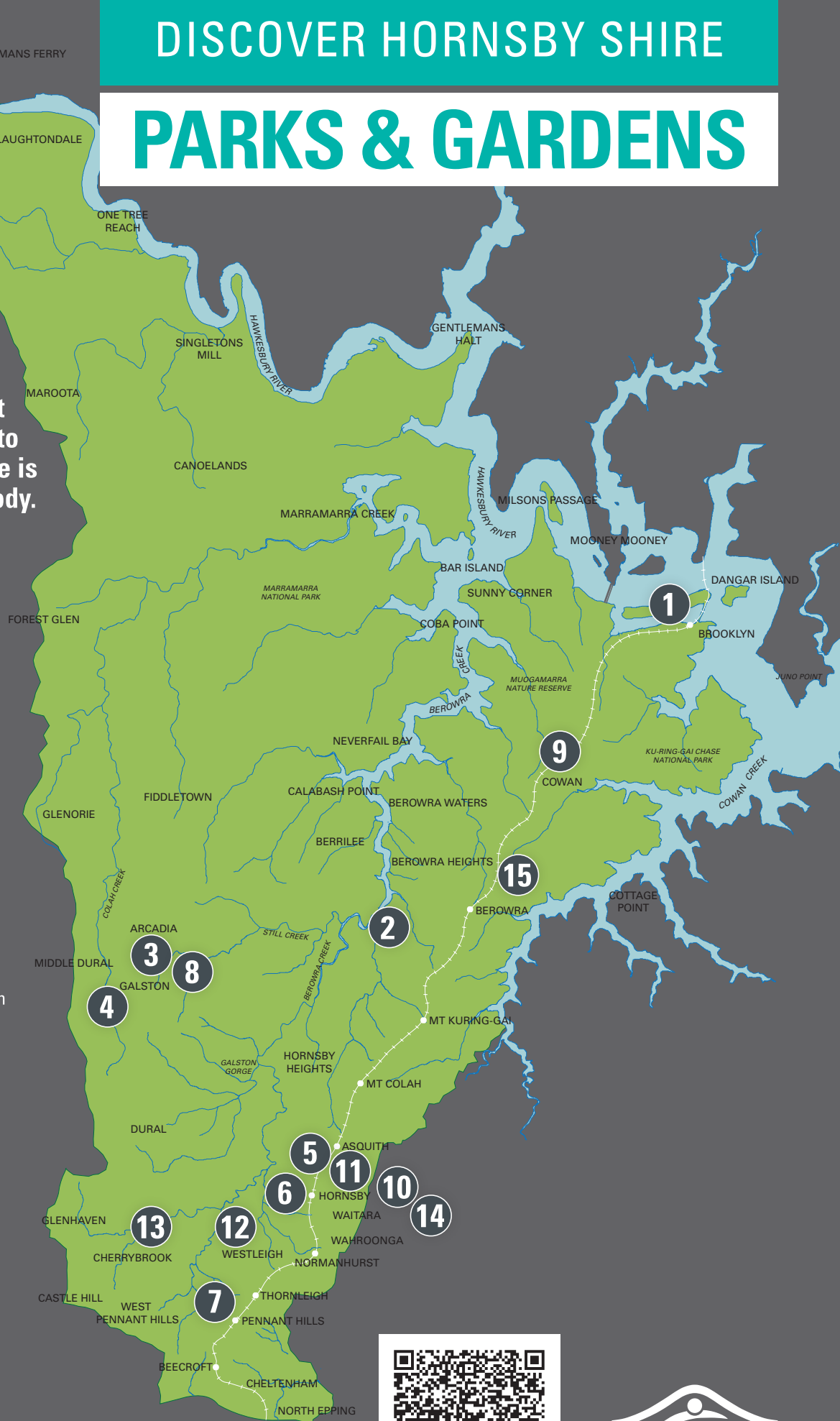


DISCOVER HORNSBY SHIRE

PARKS & GARDENS

Hornsby Shire is home to more than 130 beautiful parks, playgrounds and gardens. From great play equipment for the kids and excellent picnic spots, through to tranquil gardens, there is something for everybody.

- 1. McKELL PARK**
Dangar Road, Brooklyn
- 2. CROSSLANDS RESERVE**
Somerville Road, Hornsby Heights
- 3. FAGAN PARK**
Arcadia Road, Galston
- 4. GALSTON RECREATION RESERVE**
Galston Road, Galston
- 5. STOREY PARK**
Old Berowra Road, Asquith
- 6. LISGAR GARDENS**
Lisgar Road, Hornsby
- 7. LILIAN FRASER GARDEN**
Corner Bellamy & Laurence Streets, Pennant Hills
- 8. CARRS BUSH PLAYGROUND**
Carrs Road, Fagan Park, Galston
- 9. COWAN OVAL PLAYGROUND**
Bujwa Bay Road, Cowan
- 10. ORARA PARK PLAYGROUND**
Orara Street, Waitara
- 11. REDDY PARK PLAYGROUND**
Pretoria Parade, Hornsby
- 12. RUDDOCK PARK PLAYGROUND**
Coral Heath Avenue, Westleigh
- 13. THE LAKES OF CHERRYBROOK PLAYGROUND**
Corner Shepherds Drive and Macquarie Drive, Cherrybrook
- 14. WAITARA OVAL PLAYGROUND**
Waitara Ave, Waitara
- 15. WARRINA STREET OVAL PLAYGROUND**
Hillcrest Road, Berowra



To learn more, scan the QR code or visit hornsby.nsw.gov.au/parks



Twilight music concert in Wahroonga Park

Wahroonga Park **Coonanbarra Road, Wahroonga**

This pretty park is a 5 minute walk from Wahroonga train station and known for its magnificent rotunda and magnolia trees. There is a toddlers play area with swings, a slide and a climbing hut.

Wahroonga Park hosts community events such as weekly outdoor fitness classes, the Twilight music concert and the Wahroonga Food & Wine Festival in October.

Lisgar Gardens **Lisgar Road, Hornsby**

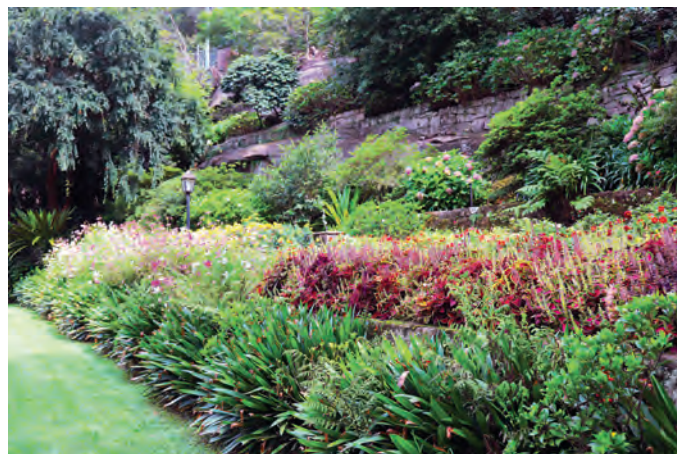
discoverhornsby.com/parks/lisgar-gardens/

Discover the tranquillity of the award-winning Lisgar Gardens, just a stone's throw from Hornsby's busy west side. A peaceful hillside retreat overflowing with flowers, it's the perfect place to enjoy a picnic or while away an afternoon relaxing in the beautiful surrounds.

Enter the discreet gates and descend the path to discover the 6.5 acre 'secret gardens' built on a steep hillside, with more than 90 varieties of camellia blossoming among the spectacular green landscape. Revel in the rich history of these beautiful gardens dating back to 1917, with some of the original camellias still in place today.

While the camellias are undoubtedly the garden's biggest drawing point, they are complemented by rhododendrons, azaleas and gardenias along with native trees and ferns.

Explore the gardens to find a covered pavilion area, a shade house containing fishponds, a gazebo, three waterfalls, informal lawn areas, picnic tables and even a rainforest walk. If you are feeling energetic, head into the spectacular bush on the Florence Cotton Reserve bush loop.



Lisgar Gardens, Hornsby

Fagan Park **38-48 Arcadia Road, Galston**

discoverhornsby.com/parks/fagan-park/

Enjoy a perfect day out at the stunning Fagan Park. With beautifully manicured gardens, 55 hectares of rolling green space and fabulous picnic and playground facilities, it's one of Hornsby Shire's most beautiful attractions.

Explore the 10-hectare Gardens of Many Nations, with 11 exquisitely themed gardens – including Japanese, Dutch, Chinese and Mediterranean gardens. Learn about sustainable gardening and the Eco Garden.

Enjoy your lunch at one of the picnic shelters or electric barbecues on-site. Or bring a picnic blanket and sit among the lush green grass.

Kids will love the two large playgrounds at Fagan Park, bicycle paths and short bushwalking trail.

Crosslands Reserve Somerville Road, Hornsby Heights

discoverhornsby.com/parks/crosslands-reserve/

Walk or drive down the access road at the end of Somerville Road, Hornsby Heights and leave the suburbs behind at this beautiful natural reserve. Get close to nature and relax at Crosslands Reserve, a gorgeous setting within Berowra Valley National Park that is great for picnics, camping and outdoor activities.

If you want to spend a few hours outdoors, shelters and the picturesque scenery make Crosslands Reserve a great choice. There is also a playground with a flying fox and a bicycle track to keep the kids busy.

For the active, there's easy access to the Crosslands Trail exploring the stunning bushland that runs along the Berowra Creek foreshore with gorgeous views and rare tree species. Or you can use the reserve as your launching site for the spectacular Great North Walk

For an overnight outdoor adventure under the stars, book a camping block, although you will have to 'get back to basics' with no showers or power available on-site.

St Ives Showground Regional Playground

452 Mona Vale Road, St Ives

Visit the largest playground ever built in Ku-ring-gai at St Ives Showground. The playground has equipment for very young children through to those in their teens. Two striking features are the tall climbing frame with turrets and bridges and a large circular swing. There are plenty of seats and picnic areas to relax in and the playground is close to the Showground café near the main arena.



St Ives Village Green Playground

St Ives Village Green

Village Green Parade, St Ives

Next door to St Ives Shopping Village you'll find the St Ives Village Green recreation area. A striking spiral slide and a tall timber climbing frame are just some of the features of the Village Green playground. The new skate park has exciting challenges for both skateboarders and scooters. The Village Green is a large shady park with seating and picnic facilities and plenty of parking nearby.



It takes a

Village

*Proudly Independent
for over 60 years.*

*110 National and
Independent retailers.*

  stivesvillage.com.au
[@stivesvillage](https://www.facebook.com/stivesvillage)



Ku-ring-gai
Wildflower Garden



Explore Ku-ring-gai Wildflower Garden



Ku-ring-gai Wildflower Garden is located in 123 hectares of unique bushland at St Ives. The Garden has 18 threatened species of plants and animals and contains endangered vegetation, forests, walking trails and waterfalls.

The Wildflower Garden is open to the public daily, with picnic areas, parking, accessible toilets and a diverse calendar of environmental education programs.

Visitor Centre and Wildflower Nursery

Our Visitors Centre is open daily for information on walking tracks and planning your visit. Browse the gift shop and Wildflower Nursery, meet native animals or enjoy light refreshments.

Ku-ring-gai Wildflower Garden

A 420 Mona Vale Road, St Ives **P** 9424 0353 **E** kwg@krg.nsw.gov.au
W krg.nsw.gov.au/wildflowergarden **Facebook/Instagram** [kwildflowergarden](https://www.facebook.com/kwildflowergarden)



Activities and events



Explore our trails

Explore a wide range of wilderness tracks and trails at the Wildflower Garden ranging from short strolls to two hour hikes.



Book a picnic area

Book a picnic area or outdoor space for your event.



Host an event

The picturesque Caley's Pavilion can be hired for small weddings, functions and corporate events. It features an indoor function room and outdoor patio overlooking a delightful bush garden.



Book a private experience

Book a private ranger led experience for you and your group. Options include native fauna encounter, bushfoods, guided interpretative trail walk or campfire experience.

St Ives Showground & Regional Playground

St Ives Showground is an exciting major events destination providing community, recreation, education, cultural and event opportunities. It is also the home of the largest inclusive playground in northern Sydney.

St Ives Showground has a range of venues available for hire and there are plenty of picnic areas with easy access to toilets and parking.

A 450 Mona Vale Road, St Ives
E showground@krg.nsw.gov.au
W krg.nsw.gov.au/showground

P 9424 0353
Facebook [stivesshowground](https://www.facebook.com/stivesshowground)



National Parks

Explore & Discover our National Parks. There is always something new and exciting to explore in our national parks! Enjoy a picnic under the Bobbin Head Pavilion, hire a boat or kayak to discover our waterways or let the Discovery Chase Alive volunteers take you on a guided walk. In the northern suburbs there are ten National Parks just waiting for your next adventure.



Kalkari Lookout - photo credit Kalkari Discovery Centre NPWS



Visit

Kalkari Discovery Centre

Ku-ring-gai Chase National Park

At the freshly revamped Kalkari Discovery Centre, you'll be inspired to learn more about the park's plants, animals and history, under the guidance of Kalkari's knowledgeable volunteers.

Walk the Discovery Trail and take in the expansive views over Cockle Creek and the Ku-ring-gai Chase National Park.

Visit the Kalkari Discovery Centre website to find out more, The Discovery Centre is open 7 days from 9.30am to 4.30pm.

<https://www.nationalparks.nsw.gov.au/things-to-do/visitor-centres/kalkari-discovery-centre>

For more information visit
[nationalparks.nsw.gov.au](https://www.nationalparks.nsw.gov.au)
or call 02 9472 9300



#NSWParks



Kalkari Discovery Centre

nationalparks.nsw.gov.au/things-to-do/visitor-centres/kalkari-discovery-centre

Kalkari Discovery Centre is located in the Bobbin Head precinct of Ku-ring-gai Chase National Park. To get there, enter the park from Ku-ring-gai Chase Road, off the M1 or from Belmont Parade, Mount Colah. At Kalkari, you'll have the opportunity to learn more about the park's flora, fauna and rich history, under the guidance of Kalkari's knowledgeable volunteers. Find out more about the Discovery Trail and the range of educational activities for adults and children on offer.

Berowra Valley National Park

nationalparks.nsw.gov.au/visit-a-park/parks/berowra-valley-national-park

Please remember that dogs are not allowed in Berowra Valley National Park.

Berowra Valley National Park is a bushwalkers' paradise with more than 70km of walking tracks and fire trails, including 25km of the Great North Walk. This large park is nestled between Hornsby Heights, Thornleigh, Galston, Pennant Hills and Cherrybrook, with views and access to the quiet waters of Berowra Creek. At Crosslands Reserve, enjoy picnic and barbecue facilities by the water as well as short walks. Barnetts Lookout at the end of Barnetts Road Berowra Heights has wheelchair access, a children's play area and lovely views across Berowra Valley. Berowra Creek is a wonderful spot to drop in a line or enjoy canoeing or kayaking on the calm waters. Backpack camping is also permitted at approved locations along the Great North Walk and at Crosslands Reserve. For bookings contact Hornsby Council Parks (02) 9847 6791.



Sphinx Memorial to Bobbin Head loop track, Ku-ring-gai Chase National Park. Photo credit - Natasha Webb /DPE

Bobbin Head

nationalparks.nsw.gov.au/things-to-do/picnic-areas/bobbin-head

Bobbin Head is located on the western side of Ku-ring-gai Chase National Park. It offers picnic grounds, calm waterways and a wide variety of walking tracks for various abilities. Free barbecues, a mangrove boardwalk and a children's playground can also be found here. Apple Tree Bay boat ramp provides access for boat owners, and canoe launch areas are located at Apple Tree Bay and near the Gibberagong boardwalk for exploring Cowan Creek. Boat hire is available from Empire Marina and paddle boats from the Bobbin Head Wharf on weekends and school holidays, weather permitting. Enjoy a meal at the Waterside Bistro.

Lane Cove National Park

nationalparks.nsw.gov.au/visit-a-park/parks/lane-cove-national-park

Lane Cove National Park is the perfect place for a family day out. Winding through the bush is the picturesque Lane Cove River. There is an abundance of picnic areas, barbecues, children's play equipment, a variety of cycle paths, and easily accessible trails for little legs. On weekends and public holidays, you can hire a canoe, kayak, rowboat or pedal boat from the Lane Cove Boatshed. Daily entry fee of \$8 per vehicle. The Café is open Tuesday to Friday: 10am to 4pm and Saturday, Sunday and public holidays: 9.30am to 5pm.

Barrenjoey Lighthouse

Situated at Barrenjoey Head Palm Beach, Barrenjoey Lighthouse is an iconic stop for visitors to enjoy stand-out views of Broken Bay, Ku-ring-gai Chase National Park and the Pacific Ocean. The beautifully restored lighthouse was originally built from sandstone in 1881. There is no vehicle access to Barrenjoey Lighthouse. Paid parking is available at Governor Phillip Park.




Relaxed vibe by the water.
Great Coffee. Great Food. Great wine.

Empire Marina Bobbin Head
Ku-Ring-Gai Chase National Park
Open 7 days for Breakfast and Lunch
Licensed, Petersons Wines
Casual Berthing Available





Booking ahead is recommended call 9457 9011
or see watersidebistro.com.au to book online
Sign up for our Bistro Bites News on future evening events
& check out our private function/meeting space for up to 30
Follow us on @ @watersidebistroSydney

See you soon by the water!









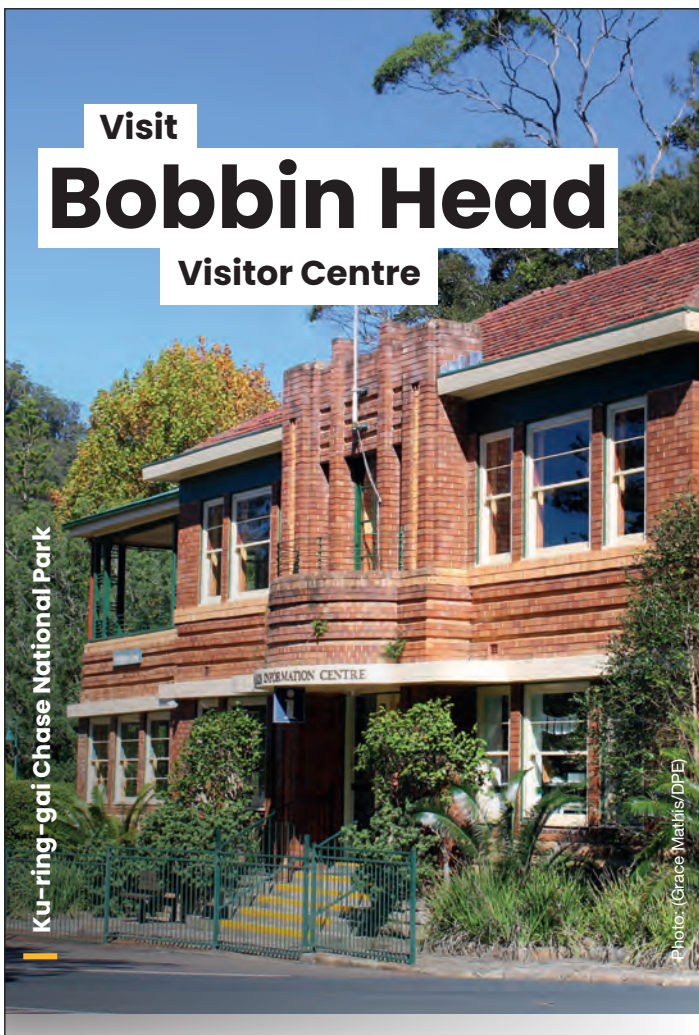


Bobbin Head Visitors Centre - photo credit NPWS

Bobbin Head Visitor Centre

nationalparks.nsw.gov.au/things-to-do/visitor-centres/bobbin-head-information-centre

Bobbin Head Visitor Centre is located in the historic Bobbin Inn at the Bobbin Head Picnic Area. Friendly staff can assist you with NSW Parks passes and information on walks, talks and other events in your local National Parks. With great advice, you'll catch all the highlights and make the most of your time. You'll also find the perfect gift when you browse the unique range of Australian made, sustainable and ethically sourced products inspired by the local flora and fauna. Open daily 10 – 4pm.



Visit

Bobbin Head

Visitor Centre

Ku-ring-gai Chase National Park

Photo: (Grace Mathis/DPE)



Ku-ring-gai Chase National Park

Bobbin Head Visitor Centre
Open everyday from
10am to 4pm

Discover the highlights of Ku-ring-gai Chase National Park at Bobbin Head Visitor Centre. Seek advice from friendly staff on the spectacular walks of the area and make the most of your time in the park. Browse the gift shop and the unique range of Australian made, sustainable and ethically sourced products inspired by the ecology of the local area.

For more information visit
nationalparks.nsw.gov.au
or call 9472 8949



Ku-ring-gai Chase National Park

nationalparks.nsw.gov.au/visit-a-park/parks/kuringgai-chase-national-park

Ku-ring-gai Chase National Park, proclaimed in 1894, is New South Wales' second oldest park and conserves up to 15,000 hectares of sandstone bushland. It encompasses coastline, rainforest, rocky cliffs, bushland, mangroves and a portion of the Hawkesbury River. This magnificent National Park also offers Aboriginal sites, beautifully secluded beaches, scenic lookouts, and both mountain bike and walking tracks and trails for various skill levels. Daily entry fee of \$12 per vehicle.

Marramarra National Park

nationalparks.nsw.gov.au/visit-a-park/parks/marramarra-national-park

Marramarra National Park is a peaceful reserve overlooking the picturesque Hawkesbury River and Berowra Creek. It is a great spot for canoeing, kayaking, swimming, cycling, bushwalking, birdwatching and camping. There is bush camping available at Gentlemen's Halt, on the shores of the Hawkesbury River, and at Marramarra Creek. For more information or to book your bush camp, visit the website.

Garigal National Park

nationalparks.nsw.gov.au/visit-a-park/parks/garigal-national-park

Garigal National Park starts 12km north of Sydney's CBD and covers bushland from Middle Harbour Creek north to Mona Vale Road and east to the Wakehurst Parkway and Deep Creek. Garigal National Park offers bush walks, bike trails and canoeing. Davidson Park also offers canoe launching ramps and multiple lane boat ramps.

Muogamarra Reserve

nationalparks.nsw.gov.au/passes-and-fees

Muogamarra Nature Reserve, located just off the old Pacific Highway north of Cowan, is a great place to view wildflowers in spring and enjoy stunning views of the Hawkesbury River, Broken Bay and nearby islands. Muogamarra opens for only six weekends a year and visits must be pre-booked. For more information visit <https://www.nationalparks.nsw.gov.au/visit-a-park/parks/muogamarra-nature-reserve>
The best way to visit these beautiful NSW national parks is to purchase a NSW Parks Pass. See the website to purchase your pass.



Reconnect
with *nature*

Ingenia
Holidays
AVINA

Recharge your batteries and reconnect with nature at Ingenia Holidays Avina. Nearby national parks, the Hawkesbury Valley and the Blue Mountains offer endless day trip options.

ingeniaholidays.com.au/avina | 02 9627 1847 | 217 Commercial Rd, Vineyard NSW

Markets & Festivals

For lovers of food, festivity, live music and fresh local produce, the local markets and festivals in the Hornsby Ku-ring-gai region offer the best! Check out the dates so you don't miss our local markets where you can sample the finest local produce and enjoy the best in entertainment suitable for all ages.

Local Markets

Everyone loves local markets! Our local markets are true community markets selling hand made crafts and gifts, plants, local wines, home-made cakes and slices and fresh produce from farms in the region's rural district.

Berowra Community Markets

Berowra Uniting Church
1st Saturday of every month. 9am to 2pm

Gordon Markets

Undercover Council Car Park,
Wade Lane, Gordon
2nd Sunday of the month. 8.30am to 2pm

Organic Food Markets

Hornsby Mall
Every Thursday from 8am to 2pm
St Ives Showground
Every Saturday 8am to 2pm

Turrumurra Fresh Produce & Artisan Market

Turrumurra Memorial Park
Every Wednesday from 8am to 1pm

Village Markets:

Dural - East Lindfield - Glenorie

Dural Country Club on
2nd Sunday of the month. 9am to 2pm
East Lindfield Community Hall on
3rd Sunday of the month. 9am to 2pm
Les Shore Oval Glenorie on
5th Sunday of the month. 9am to 1pm



Local Farm Stalls

Straight from the orchards and veggie gardens, stock up your pantry with some produce from our local farmers!

The Persimmon Place

375 Galston Rd Galston

Warrah Farm Shop

20 Harris Rd, Dural

Dural Kiosk

873 Old Northern Rd, Dural

Canoelands Orchard

27-29 Canoelands Rd, Canoelands

Out & About



Wednesday's - 8am to 1pm
Turrumurra Memorial park

Sustainable Bees Wax Candles

Gourmet Cheese

Hand Stuffed Olives

Freshly baked breads

Hand crafted muesli

.... And so much more



Organic Food Markets

HORNSBY MARKET

Every Thursday: 8am - 2pm
@ Hornsby Mall (by the fountain)

ST IVES MARKET

Every Saturday: 8am - 2pm
@ St Ives Showground

*Certified Organic & conventional fresh produce
Artisan gourmet food Organic meat Gluten free pies
& pastries Sourdough Bread Small goods & grocery*

Food stalls welcome, call 9999 2226
www.organicfoodmarkets.com.au

Berowra Uniting Church Community Markets

1ST SATURDAY OF MONTH
(excluding January)

from 9am-2pm,

Berowra Uniting Church,
4-6 Alan Rd Berowra Heights,
Devonshire teas, ceramics,
jewellery, potted plants &
flowers, bric-a-brac etc.

Donations monthly to non-profit charities.



Enquiries
Ph 9456 6312



Village MARKETS

DURAL | EAST LINDFIELD | GLENORIE

DURAL COUNTRY CLUB | 2ND SUNDAY 9AM-1PM
EAST LINDFIELD COMMUNITY HALL | 3RD SUNDAY 9AM-2PM
LES SHORE OVAL GLENORIE | 5TH SUNDAY 9AM-1PM

QUALITY GROWERS, ARTISANS, FASHION & FOOD

WWW.VILLAGEMARKETS.AU



A fine winter's day at the Berowra Woodchop Festival

Berowra Woodchop 2023

A major event on the NSW Axemen Association's calendar is the Berowra Woodchop which is organised by Berowra Apex Club and is set to impress again on Sunday 27th August, 10am to 4pm.

This popular event, which began in 1994, has grown each year. In 2022 the event was moved to a larger location – Warrina Street Oval, Berowra. This event is a family friendly extravaganza which features fairground rides, a petting zoo, a diverse array of market stalls with something for everybody, hot and cold food to cater to all tastes and budgets, live music, licensed bar and other entertainment throughout the day as well as the main event, the Woodchop. Experienced NSW axemen compete against each other in numerous categories to see who comes out on top. This is a free community event made possible by support from Hornsby Shire Council as well as local businesses, McGrath Real Estate, the Berowra Village Tavern and Nobby Kitchens.

Wahroonga Food + Wine Festival

wahroongafoodandwinefestival.com.au

Held on a Sunday in springtime in Wahroonga Park. Wahroonga Food + Wine Festival features Celebrity chefs, cooking classes, wine tastings and an array of fresh produce and food stalls.

Twilight Concert

krg.nsw.gov.au

Every October in Wahroonga Park the Twilight Concert takes place between 5pm and 9pm. This free event features a selection of cover bands playing crowd favourites that are perfect for dancing. Concert-goers can bring a picnic dinner or buy food and drinks at the venue.

Ku-ring-gai Sculpture Trail

krg.nsw.gov.au/sculpturetrail

Ku-ring-gai's Sculpture Trail celebrates sustainable art in the Ku-ring-gai Wildflower Garden. The sculptures are displayed each year between September and October.

The sculpture trail map is available digitally at the venue so remember to bring your smart phone.

The Westside Vibe

hornsby.nsw.gov.au/lifestyle/events/westside-vibe-2023

The Westside Vibe in Dural Lane Hornsby overflows with rhythm, creativity, colour, and the smells of international cuisine.

A sensory experience across sumptuous food options, pop-up bars, market stalls and five hours of free live music make this a night not to be missed.

Vibrant lanterns, garlands and reeds will transform the area around Hornsby's Dural Lane into a magical alleyway for one night.

CANOELANDS ORCHARD

More Than Just A Farm

Pick your own seasonal nectarines, peaches, plums, strawberries, blueberries, apples, citrus, persimmon, pomegranate, tomatoes and more.

We do parties, functions, weddings, disability groups, seniors and probus group tours. High Tea, Play group, Grazing Boxes, team building, excursions, tractor rides, farm animals, play ground, picnic area and so much more!

Shop onsite with our own honey, jams & chutneys and we also have a cafe.

PH 0419 688 039

Canoelands Orchard

27 Canoelands road, Canoelands

www.canoelandsorchard.com



Out & About



Australian Reptile Park **#1 On Your Bucket List** Pacific Highway, Somersby – only 30 minutes from Hornsby!

www.reptilepark.com.au

Looking for a wild adventure that's right on our doorstep?

Come along for the Best Family FUN Day OUT at the Australian Reptile Park – the Central Coast's #1 must-see attraction that's just a short 30-minute drive from Hornsby.

With over 2,000 unique animals, including Australia's most iconic species like koalas, kangaroos, platypus, and quokkas, the Park is a true gem that offers something for everyone. Experience free daily live shows and get up close with Galapagos tortoises or witness Elvis, Australia's crankiest croc that calls the Park home!

Don't miss the Lost World of Reptiles, where you can see some of Australia's most venomous snakes and other exotic reptiles. And be sure to learn about the lifesaving work that the Park does through its anti-venom program and its conservation efforts to save Australia's endangered species. Plan your visit today and discover the wonders of this incredible wildlife park. Open daily from 9am-5pm. Visit the website for more information.

www.FORBES FOOTWEAR.com.au

The home of
**Orthotic Friendly
Fashion[®]**

Come in and see our friendly team today



153 Peats Ferry Rd Hornsby | 9477 1613 | open Monday to Saturday

Visit Australia's Only Metropolitan State Forest

forestrycorporation.com.au

Take a turn off Castle Hill Road and be transported from the suburbs to the bush at Cumberland State Forest, Australia's only metropolitan state forest. Come to experience the towering natural forest and unique planted arboretum and stay to enjoy the dog-friendly picnic areas, free barbecues, and walking trails for all abilities, including the pram and wheelchair-accessible Sensory Trail.

Cumberland State Forest is also home to Café Saligna, a Plants Plus nursery, and a Tree Top Adventure Park high ropes course for the more adventurous (bookings essential).

With free entry and parking, Cumberland State Forest really is the region's best kept secret.

Cumberland State Forest, 95 Castle Hill Road West Pennant Hills is open seven days a week from 8.30am - 5.00pm, or 6.00pm during daylight saving hours, and leashed dogs are welcome. Parking is available in the forest and it is also walking distance from the Cherrybrook Metro Station.



Relax and recharge
at Cumberland
State Forest

Come and explore Australia's only metropolitan state forest.

- Scenic walking trails
- Picnic & BBQ areas
- High ropes course
- Nursery
- Café

95 Castle Hill Road
West Pennant Hills

*There's something for
all ages and interests.*



forestrycorporation.com.au/visit



GOLDEN KANGAROOS
HORNSBY CONCERT BAND

Recruiting now!

Our ensembles range from concert bands for players of all levels to a marching band and stage band - providing opportunities for community musicians with varied experiences and interests.



Contact us!
Contact@Goldenkangaroos.net

Find Us!
Beecroft Community Centre
111 Beecroft Rd, Beecroft, NSW

Find Us!
goldenkangaroos
goldenkangaroos.org.au



The Golden Kangaroos

goldenkangaroos.org.au

The Golden Kangaroos is a community music organisation providing the opportunity for people of all ages to learn and perform together.

Established in 1970, the band has a proud heritage of bringing music to the Hornsby Shire and the wider community.


We serve the community with a busy schedule of performances each year including:

- Free concerts at the Epping Club
- Marching and other performances at commemorative and civic occasions
- Participation in band contests and festivals
- Performances supporting community and aged care organisations, fetes and events
- Workshops and festivals supporting rural communities

Our ensembles range from concert bands for players of all levels to a marching band and a stage band - providing opportunities for community musicians with varied experiences and interests.

A few of our upcoming performances:

- Sunday 13th August 2023: Explorer Band and Marching Band at Epping VP Day service and march
- Sunday 20th August 2023: Concert at Epping Club



The Bookplate bookshop is run by Tanya Natalie and her dad, Gerard. We specialise in secondhand books and have over 35,000 in stock, along with some comfy reading chairs! Tanya is also an accomplished editor, if you are interested in having your work edited.


thebookplate.com.au
facebook.com/thebookplate
173 Peats Ferry Road, Hornsby
ph 9482 3454
thebookplatebookshop@gmail.com

tanyanatalie.com.au

MARIAN ST
THEATRE
FOR YOUNG
PEOPLE



Since 1958 The Lions Club of Hornsby have been making a difference in the Community and around the world and we have been having a lot of fun doing it.



Meetings every second Tuesday of the month at Magpies Waitara at 7.30pm. Everyone Welcome!
For membership enquiries call Ted on 0414 806 840
<https://hornsby.nsw.lions.org.au>
WHERE THERE'S A NEED, THERE'S A LION



**Come & play
18 or 36 holes
of putt putt**

Fun for all the family!

- Kids Parties • Team building
- 2 x 18 hole mini golf courses

Plus Cafe.

Open: School Holidays
7 days 9am - 6pm
Outside School Holidays:
Thurs; Fri; Sat & Sun

9651 1334

Cnr of Cranstons and Old Northern road, Dural 2158
www.duralputtputt.com.au

Marian Street Theatre for Young People

www.mstyp.org.au

Treasure Island - Sail with us to Treasure Island this Spring 2023. Swing aboard the Hispaniola and be swept along on a swashbuckling adventure of mayhem and merriment.

What will happen when Jemma Hawkins and a band of bumbling pirates hoist the mainsail and weigh the anchor in a quest to find the fabulous treasure of Captain Flint? Set sail to Ku-ring-gai Town Hall this October and find out.

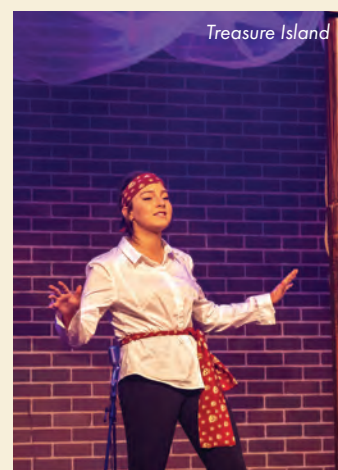
This adaptation by Les Winspear of the Robert Louis Stevenson classic has something for everyone including fun characters and lots of laughs.

Performed by the young actors of Marian St Theatre for Young People, Treasure Island is suitable for all the family.

Dates: Wednesday 4th October – Saturday 7th October 2023

Performance Times: 10:30am & 1pm daily. Duration: 70 minutes, no interval

Ticket Prices: Single Ticket \$20 (all ages), Group of 4 \$65 (any combination of ages), Vacation Care bookings available. Bookings: www.mstyp.org.au or (02) 9880 2356
Location: Ku-ring-gai Town Hall, 1186 Pacific Hwy, Pymble,





The Ku-ring-gai Philharmonic Orchestra

www.kpo.org.au

The Ku-ring-gai Philharmonic Orchestra's (KPO) 2023 season is a musical banquet par excellence with brilliant concerts for the whole family.

The KPO performs Kid's Proms Concerts, concerts featuring Verdi's Requiem and Beethoven's 5th, the prestigious KPO Concerto Competition and free Community Concerts – alongside working with emerging young composers.

Presented in Chatswood and St Ives this is a year not to be missed.

Full details and bookings are available on the KPO website.




Award-winning community orchestra playing beautiful classical music on the north shore.

Ku-ring-gai Philharmonic Orchestra promotes

- Symphony concerts
- Kids' Proms
- Emerging Composer Workshops
- Free community concerts
- NSW Secondary Schools Concerto Competition

Visit kpo.org.au for tickets and information about concerts and how to join as a player.



Visit Walkabout Wildlife Sanctuary in Calga



Step into the animals' world! Kangaroos, emus, goannas, turtles, lizards, possums, plus all the other wild creatures that live in the Australian bush are free to range through 80 fox-proof acres of wild habitat. Animals that need extra care, like koalas, Tasmanian devils, dingoes, wombats, echidnas, flying foxes, bilbies and birds, live in natural camps.

You can arrange a behind-the-scenes encounter with these magnificent animals! You can even meet the meerkats and servals (African wild cats) central to Walkabout's "Safe Cat Safe Wildlife" education program. And don't forget the farm animals in the feeding and petting area! See guineapigs, rabbits, alpacas, goats, Mrs Goose and her chickens and everyone's favourite, Waffles the Pig.

If you like bushwalking, you can explore the tracks to visit ancient Aboriginal sites, enjoy the birdlife, find native beehives and termites, search for skinks in the sandstone rock crevices, and spot elusive wallabies amongst the gums and banksia.

Follow Walkabout Park Wildlife Sanctuary on Facebook for what's on.

Out & About

Galston Valley Miniature Railway

www.hme.org.au

Model Engineering Club, near Hornsby NSW

Visit our extensive 5" gauge miniature railway, with a main-line length about 1 km, and running through a serene natural bush setting. Rides on the miniature trains are available on our monthly Public Running Days.

We also have a large G1 layout which is being developed with scale buildings which is a 'must see'. As well as our display of small stationary models, garden gauge model railway display, and Miniature Traction Engine rides (on some days). Picnic tables, toilets and BBQs available. Canteen has light refreshments for sale.

Entry via pre-purchased tickets only, with rides available onsite for \$3.50 per person per ride or \$15.00 per person on an all-day ride pass. Galston Valley Railway Merchandise is now also available.

For bookings and more information visit our webpage.



The Hornsby Shire illustrated tea towel

Over 40 lively hand-drawn watercolour illustrations bringing to life the buildings, activities, flora and fauna of Hornsby Shire.

local artist • 500 x 700mm

• 100% cotton



The perfect gift for anyone who loves our bushland shire

order from

www.maplocal.au

just \$29 inc GST

Also available
KU-RING-GAI



FOR ALL GIFTS AND SOUVENIRS



SPECIALISING IN QUALITY AUSTRALIANA

Just 2 minutes walk from Gordon Train Station

Be active. Stay connected with the Y

AT KU-RING-GAI FITNESS AND AQUATIC CENTRE

While exercise is important, so is staying connected. Come for a swim or workout. Stay for a chat. That's how we do things at the Y. Whether it is recreational swimming, swimming lessons or a gym workout you are after, our centre has the facilities to provide you the perfect space to be healthy and active!

-  50m outdoor pool and program pool
-  25m indoor pool and program pool
-  Toddler splash park
-  Swimming lessons available
-  Modern gym and wide range of fitness classes
-  Onsite café

SCAN QR CODE
TO LEARN MORE



Ku-ring-gai Fitness & Aquatic Centre

Prince of Wales Drive, West Pymble
9499 2005 | ymcansw.org.au/kfac



Roseville Theatre

Roseville Cinemas has long been a fixture of the North Shore community.

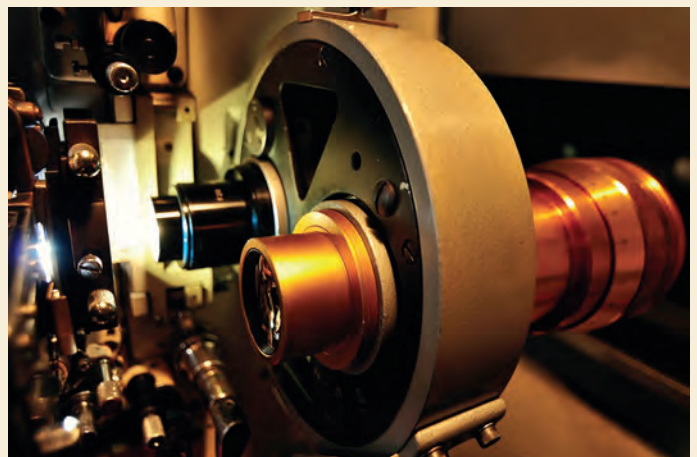
The building was originally erected in the early 1900's by Ku-ring-gai Council to serve as the Town Hall for the area. When World War I broke out, the first Australian recruitment drive for soldiers was held in the building.

In 1919, it was renamed Traynor's Picture Palace, and thus began the journey to becoming the cinema we know and love. In 1936 DB O'Connor, renovated it in beautiful Art Deco.

It has remained a family-owned business. In the early 70's ownership passed on to Hans van Pinxteren and his family, who have been running it for two generations to the present day. In 1995 it was converted to a twin cinema.

The building is one of the few surviving independent cinemas in Sydney's suburbs, resisting the encroachment of multiplexes by dedication to showing a range of top-quality local and foreign films, and continues to be an important part of the community.

Crying rooms are in both cinemas for carer/parents to enable attendance with their baby at any session.





Sunrise over the putting green - North Turramurra Golf Course

NORTH TURRAMURRA GOLF COURSE

Challenge yourself!

- A challenging 18 hole golf course
- Spectacular views over Ku-ring-gai National Park
- Open daily between sunrise and sunset
- A fully stocked pro shop with all the leading brands
- Golf lessons for all skill levels with PGA professionals
- Junior golf development program
- Discounted rates from 2pm onwards every day
- After the game visit the club for food and drinks
- Bookings essential; call the pro shop on 9144 5110

361A Bobbin Head Rd, North Turramurra

 elitegolfnsw.com.au

 Pro Shop on 9144 5110



Sydney's leading golf facility – open 7 days!



- 56 undercover hitting bays, automated tee up
- 2 eighteen hole Mini Golf courses - great family fun!
- Have a lesson from one of our qualified PGA Professionals
- Relax in the Bunker Café
- Our golf shop is fully stocked with all major brands
- Kids Birthday Parties - Corporate Golf Days - Small Meeting Venue

Brickpit Park, 142-178 Pennant Hills Rd (entry from Dartford Rd) Thornleigh

All enquiries: **9875 5445** www.thornleighgolfcentre.com.au



Local Golf Courses:

Asquith Golf Club

Lord Street, Mount Colah
(02) 9477 1266

Avondale Golf Club

Avon Road, Pymble
(02) 9449 6455

Gordon Golf Club

2 Lynn Ridge Avenue, Gordon
(02) 9498 1913

Killara Golf Club

556 Pacific Highway, Killara
(02) 9498 2700

North Turramurra Golf Course

361A Bobbin Head Road, North Turramurra
(02) 9144 5110

Pennant Hills Golf Club

Cnr Copeland & Burns Road South, Beecroft
(02) 8860 5800

Pymble Golf Club

Cowan Road, St Ives
(02) 9144 2884

Roseville Golf Club

4 Links Avenue, Roseville
(02) 8467 1800

Wisemans Ferry Golf Club

5564 Old Northern Road, Wisemans Ferry
(02) 4566 4422



GORDON GOLF COURSE

We welcome visitors!

- A par 65 18 hole public golf course open from sunrise daily
- Great views and some challenging holes
- Free parking next to the course
- A fully stocked pro shop for all your golfing needs. Hire sets available
- Discounted rates from 2pm onwards every day
- After the game visit the club for delicious food and drinks. Chef specials on offer weekly

1 Lynn Ridge Avenue Gordon

gordongolfcourse.com.au

Pro Shop on 9498 1277

Taste

Pie In The Sky

pieinthesky.com.au

At Pie in the Sky, we're all about good old-fashioned Aussie values.

We believe our quality ingredients, friendly staff and unique location make for an unbeatable Australian pie-eating experience.

Our little slice of heaven high above the M1 has been in operation for around 30 years and although we've added some 'fancy' pies and espresso coffee to the menu, we still pride ourselves on getting the basics right. Our crisp crusted pies are filled with generous chunks of lean, grass fed beef and always served hot and baked daily. Our drinks are served icy cold and the customer is always right.

We love our interesting customers and animals. Our location overlooking the Old Pacific Highway just north of Cowan attracts car and bike enthusiasts of all tastes and talents. Even the occasional Koala!

So whether you're on a mission up the coast or just feel like cruising, you're always welcome to drop by for a pie. After all, some of our regulars have been doing it for over 30 years!

Pie in the Sky, 1296 Pacific Highway Cowan, Phone (02) 9985 7018.



*eat
drink
enjoy*

Enjoy great food at The Kitchen and Lucky Magpie Asian Cuisine. Wide range of beverages on offer with free live music every Saturday night.

☎ 9487 1066

📍 11- 37 Alexandria Pde, Waitara 2077

🌐 magpieswaitara.com.au

MAGPIES
WAITARA



Hawkesbury River Oyster Shed

hawkesburyriveroystershed.com

Hawkesbury River Oyster Shed located at 6 Kowan Street Mooney Mooney is a small local oyster farm located by the water along the beautiful Hawkesbury River.

Supplying the freshest produce straight from the source, the Oyster Shed offers a casual and relaxed dining experience with fresh farmed oysters, prawns (local Hawkesbury prawns when available), freshly smoked fish, scallops, and more. Seafood platters made to order.

We are family & dog-friendly!

Boat Access - low draft/high tide - check Willy Weather for conditions
<https://www.willyweather.com.au>

Open Thursday to Sunday 10am to 4pm

HAWKESBURY RIVER

Oyster Shed

— MOONEY MOONEY —



We are a small local oyster farm supplying produce straight from the source

Eat In or Take Away

Our Local Oysters

Prawns & Fresh Seafood

In House Hot Smoked Salmon, Trout & Mullet

Selection of Cheddars, Olives & Pate

BYO alc only

Open Thursday - Sunday
10am to 4pm

Visit us or order on the phone!
0423 285 867

6 Kowan Street, Mooney Mooney

www.hawkesburyriveroystershed.com



Kipling's

GARAGE BAR

Open 7 days
for lunch & dinner

LUNCH SPECIAL
\$65 3-course lunch*
**\$68 if you order the steak*

www.kiplingsgaragebar.com.au

2 Eastern Rd, Turramurra 2074 | bookings@kiplingsgaragebar.com.au | T 02 9440 4088

Taste

West Pymble Bicentennial Club



A hidden gem in the leafy suburbs, perfect for your next event, function, family meal, a drink with friends or a game of barefoot bowls

2 Prince of Wales Drive
West Pymble
9498-3135 | wpbc.com.au



- Bistro 7 days
- Accommodation
- Tab , Keno, Foxtel
- Live music Sundays
- Regular Jam nights
- Family friendly, Beer garden
- Courtesy bus

www.anglersresthotel.com.au

Find us on Facebook

216 Brooklyn Road, Brooklyn

Phone 9985 7257

Opposite Hawkesbury River Railway station

THE GALSTON CLUB

BISTRO OPERATING HOURS

MONDAY - SUNDAY

11:30AM - 9:00PM

WEEKLY PROMOTIONS

Monday to Friday - Seniors Discount

15% off available between 11:30AM - 3:00PM. APPLIES TO FULL MENU.

Sunday & Monday - Kids Eat Free

*1x child eat free / min spend of \$30 per adult. T&Cs apply.



MEAL DEALS

MOST DEALS INCLUDE A DRINK!

TUESDAY SCHNITZEL NIGHT

THURSDAY BARRAMUNDI NIGHT

FRIDAY PORK RIB NIGHT

SATURDAY PASTA NIGHT

EVENTS & FUNCTIONS

Check out our socials for info on upcoming events - Live entertainment, Paint & Sip, Raffles and more...

Find us on



PLANNING A FUNCTION?

Contact us today to make an enquiry.

PH: 9653 2017

or

reception@galstonclub.com.au



Cafés & Restaurants

You will be spoiled for choice when dining out in the Hornsby Ku-ring-gai region.

Cafe Patina

cafepatina.com.au
64 Coonanbarra Rd, Wahroonga
Ph: 02 9489 0980

Cafe Saligna

cafesaligna.com.au
Cumberland State Forest,
95 Castle Hill Rd, West Pennant Hills
Ph: 02 9873 2955

Enzos Cucina Dural

enzoscucina.com.au
Unit 2, 286 New Line Road, Dural
Ph: 02 9651 3696

Hawkesbury River Oyster Shed

hawkesburyriveroystershed.com
6 Kowan St, Mooney Mooney
Ph: 0423 285 867

Hornsby RSL Club

hornsbyrsl.com.au
4 High St, Hornsby
Ph: 02 9477 7777

Kipling's Garage Bar

kiplingsgaragebar.com.au
2 Eastern Rd, Turramurra
Ph: 02 9440 4088

Magpies Waitara

magpieswaitara.com.au
11-37 Alexandria Parade, Waitara
Ph: 02 9487 1066

Pie In The Sky

pieinthesky.com.au
1296 Pacific Hwy, Cowan
Ph: 02 9985 7018

The Bunker Café

thornleighgolfcentre.com.au/bunker-cafe
Thornleigh Golf Centre - Brickpit Park,
142-178 Pennant Hills Rd Thornleigh
Ph: 02 9875 5445

The Coffee Shack

canoelandsorchard.com
at Canoelands Orchard
27 Canoelands Rd Canoelands
Ph: 0419 688 039

The Galston Club

galstonclub.com.au
21-25 Arcadia Rd, Galston
Ph: 02 9653 2017

Waterside Bistro

watersidebistro.com.au
Located in Empire Marina, Bobbin Head
Ph: 02 9457 9011

West Pymble Bicentennial Club

wpbc.com.au
2 Prince of Wales Drive, West Pymble
Ph: 02 9498 3135

The Anglers Rest Hotel

anglersresthotel.com.au
216 Brooklyn Road, Brooklyn
Ph 9985 7257



enzos
CUCINA DURAL

Your local Italian run by community locals Sam & Rennee Russo offering an authentic Italian Dining experience.

Woodfire Pizza with hand stretched dough
Authentic pasta dishes
Fresh seafood specials weekly
Whiskey room tastings/private dining experience

Everything is made with our special family recipes passed down through the generations!

Open 7 nights & lunches Thursday to Sunday.

9651 3696
Unit 2, 286 New Line Rd Dural
www.enzoscucina.com.au



CAFE
PATINA

GLUTEN FREE
BYO MONDAY - THURSDAY ONLY

64 COONANBARRA RD WAHROONGA
WWW.CAFEPATINA.COM.AU
9489 0980

MON - TUES 8AM - 4PM
WED - SAT 8AM - 10PM
SUN 8AM - 4PM



THE ATTIC

A boutique bowling and arcade bar located on level 2! The area includes four 45 foot ten pin bowling lanes and Australia's first augmented reality bowling - Spark, as well as a selection of traditional and custom built arcade games and large bar and dining area to relax in.

LEVEL ONE

Level One offers a completely different experience from our other areas. Our newest addition to the area includes a wood fired pizza oven and new menu with some new and old gems, accompanied by a large selection of delicious cocktails and unique creations that are exclusive to Level One.



THE BREW BAR

The Brew Bar features 20 unique beers on tap! Showcasing beer brewed as locally as Mount Ku-ring-gai, the bar is complete with snacks and a limited range of cocktails for those after something a little different.

THE COURTYARD

The Courtyard is the heart of Hornsby RSL Club and provides three distinctive dining offerings in one area. Whether it be a special event or family dinner, this area is sure to cater to every occasion.



KEKOU NOODLE BAR

Our Kekou Noodle and Dumpling Bar is part of The Courtyard and offers a large selection of authentic Asian cuisine. There is something for everyone with dishes catering for Vegetarians or Vegans, all the way though to the seafood lovers!



Where To Stay

Stay

Accommodation

- ▶ Berowra Waters Holidays: <https://berowrawatersholidays.com.au/>
- ▶ Holidays Afloat: Hawkesbury River Houseboats: <https://holidaysafloat.com.au/>
- ▶ Ibis Sydney, Thornleigh: <https://all.accor.com/>
- ▶ Ingenia Holiday Parks: Avina in Vineyard & Sydney Hills in Dural: www.ingeniaholidays.com.au/
- ▶ The Anglers Rest Hotel www.anglersresthotel.com.au
- ▶ Wild Luxury - Calabash Bay Lodge & Crane Lodge <https://www.wildluxury.co/>

Camping and Holiday Parks

- ▶ Gentlemans Halt campground Marramarra National Park. Booking details: www.nationalparks.nsw.gov.au
- ▶ The Basin campground Ku-ring-gai Chase National Park. Booking details: www.nationalparks.nsw.gov.au
- ▶ Lane Cove Discovery Park. Booking details: <https://www.discoveryholidayparks.com.au/caravan-parks/new-south-wales/sydney-lane-cove>
- ▶ Marramarra Creek campground Marramarra National Park. Booking details: <https://www.nationalparks.nsw.gov.au/camping-and-accommodation/campgrounds/marramarra-creek-campground>
- ▶ Crosslands Reserve.
Booking details: <https://www.hornsby.nsw.gov.au/lifestyle/sports-and-recreation/parks-and-playgrounds/crosslands-reserve>
- ▶ Sydney Hills Holiday and Caravan Park, 269 New Line Road, Dural.
Booking details: <https://www.ingeniaholidays.com.au/our-parks/new-south-wales/western-sydney/sydney-hills/>
- ▶ Ingenia Holidays Avina, 217 Commercial Road, Vineyard.
Booking details: <https://www.ingeniaholidays.com.au/our-parks/new-south-wales/western-sydney/avina/>

Enjoy a much needed *break*


**Ingenia
Holidays**
SYDNEY HILLS

Ingenia Holidays Sydney Hills offers a great base from which to explore and is an ideal pitstop on a long road trip. Relax and recharge with a dip in the pool or a game of tennis, or head out and explore.



ingeniaholidays.com.au/sydneyhills | 02 9651 2555 | 269 New Line Rd, Dural NSW

Heritage

Hornsby Shire Recollects

www.hornsbyshire.recollect.net.au

History lovers will be thrilled to learn about Hornsby Shire's fascinating and vibrant history. Take an online journey through the ages in Hornsby with Hornsby Shire Recollects, an interactive database with resources from the Hornsby Shire Library Local History Collection, community organisations and local history enthusiasts. It provides easy access to a rich store of heritage material, including images, documents, maps, oral histories, films and special collections, relating to Hornsby Shire, its people, and events.

You can browse the collection online as a guest or it is free to register and become a member. Once you become a member, you are also able to contribute your own knowledge and memories about the holdings, as well as create personal collections of your own. Go to Hornsby Shire Recollects website now and start learning more about Hornsby Shire's fascinating local history.

Photos: Council Chambers & Peats Ferry Road and Dural Street Hornsby



Historic Homes and Gardens of Ku-ring-gai

Ku-ring-gai is renowned for its architecture and beautifully landscaped gardens. Here are some of the best-known heritage properties, which also feature in the annual Ku-ring-gai Heritage Festival during April and May. For more details visit krg.nsw.gov.au/heritagefestival

Rose Seidler House Wahroonga

www.mhnsw.au

Rose Seidler House (1948–1950) was architect Harry Seidler's first commission after his arrival in Australia. Rose Seidler House transformed suburban house design and remains one of the most authentic representations of 20th century Australian architecture. Guided tours can be arranged through the Museums of History NSW at <https://mhnsw.au>

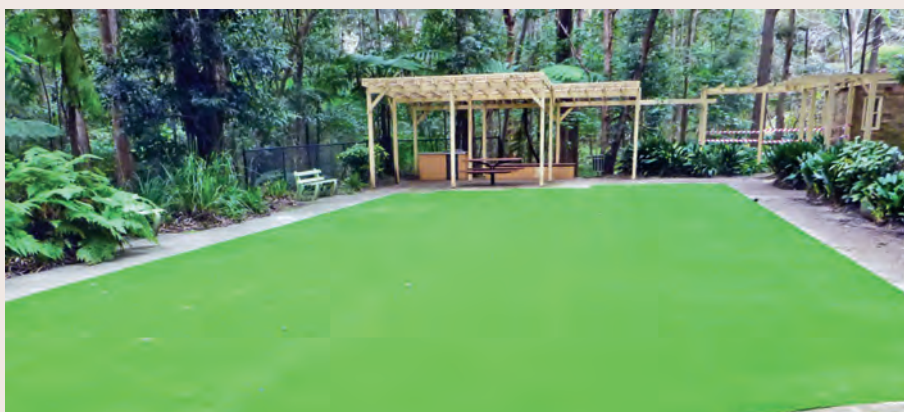
Eryldene Historic House and Garden - Gordon

www.eryldene.org.au

Eryldene is a much-loved historic house and garden in the heart of Sydney. Designed by Australian architect William Hardy Wilson for Eben Gowrie Waterhouse and his family in the early 20th century, Eryldene is now an Australian treasure for all. Bring the family and explore the garden, winding your way along Eryldene's hidden paths and through the moon gate to the internationally renowned camellia collection. Visit the website for upcoming events, including garden tours, workshops, twilight jazz, high teas and more!

Address: 17 McIntosh Street Gordon W: www.eryldene.org.au
E: eryldene@eryldene.org.au

The Gardens of Eryldene



Swain Gardens Killara

krg.nsw.gov.au

An outstanding garden with heritage significance, Swain Gardens are the creation of Arthur Newling Swain. In the 1960s Mr Swain purchased 8.5 hectares in Killara and spent his remaining years cultivating the land as a garden with a huge variety of plants. Open to the public at selected times; visit krg.nsw.gov.au for opening hours.

Swain Gardens Upgrade

Historic Fagan Park

discoverhornsby.com/parks/fagan-park

38-48 Arcadia Road, Galston

Originally the home of First Nations GuriNgai and Darug people, the 70 acre property became the home to the Fagan family who migrated from Ireland in 1848. The pioneering Fagans established the land as a successful citrus orchard servicing Sydney. After many generations, in 1980 Bruce Fagan and his sister Ida donated the property to the Department of Lands, and appointed Hornsby Shire Council as sole trustee. As part of Hornsby Council's Bicentennial Project in 1988, part of Fagan Park was devoted to depicting The Gardens of Many Nations. The original homestead, 1900s era Netherby Cottage together with its outbuildings, was restored to its former glory for the enjoyment of visitors to Fagan Park.

Today, Fagan Park features beautifully manicured gardens, 55 hectares of rolling green space and fabulous picnic and playground facilities. Explore the 10-hectare Gardens of Many Nations, with 11 exquisitely themed gardens – including Japanese, Dutch, Chinese and Mediterranean gardens. Learn about sustainable gardening and the Eco Garden.

Enjoy your lunch at one of the picnic shelters or electric barbecues on-site. Or bring a picnic blanket and sit among the lush green grass.

Kids will love the two large playgrounds at Fagan Park, bicycle paths and a short bushwalking trail.



Photos: Above - Front of Netherby Cottage
Below - Netherby Cottage Kitchen

Ku-ring-gai Historical Society

www.khs.org.au

Ku-ring-gai Historical Society is housed within the Old Gordon Public School – Ku-ring-gai's oldest public school, which operated from 1876 to 1989.

The State Heritage listed local landmark is one of the few buildings that still exists from the pioneering days of the North Shore, and was a significant part of the lives of many residents.

When the school closed, the historic building was saved from demolition by representation to the State Government from the Ku-ring-gai Historical Society and members of the community, together with the involvement of environmental activist Jack Munday.

Today, as well as being the home of the society, it includes a Headmaster's Office Museum showcasing a collection of memorabilia and photos commemorating the school's students and teachers.

Do you want to know about your house or its past occupants? Would you like to research your family history?

You are very welcome to visit the Ku-ring-gai Historical Society – we have extensive resources you can use, and we hold regular meetings with informative talks. For opening hours, see the website.



Headmaster's Office Museum



The Old Gordon School

DISCOVER HORNSBY SHIRE

HERITAGE WALK

This is a self-guided historic walking tour of the business/retail precinct of Hornsby. It is an easy grade walk which takes approximately 90 minutes to complete or can be split into two shorter walks, e.g. either the west or the east side of the railway station.



To learn more about Hornsby's historic buildings, parks and monuments of significance, scan the QR code or download the self-guided brochure from

hornsby.nsw.gov.au/hhf



Heritage



Hornsby Heritage Walk

www.hornsby.nsw.gov.au

This self-guided walking tour of the business and retail precinct of Hornsby highlights the rich social and cultural past within Hornsby Shire.

Enjoy experiencing Hornsby's buildings, parks and monuments of significance and learn about some of the stories behind them including Hornsby Girls School, the Browsery Cottage, Hornsby Court House and the famous Hornsby Water Sculpture.

It is an easy grade walk which takes approximately 90 minutes to complete or can be split into two shorter walks, for example, the east and the west side of the railway station.

Hornsby Shire Historical Society

www.hornsbyhistory.org

Come and check out the local history of the Hornsby Shire

The Hornsby Shire Historical Society welcomes visitors to its Museum, which is open each Tuesday from 10am to 2pm. Learn about our local history and explore the extensive collection of objects on display. We also have a comparative timeline showing events from around the world, in Australia and the Hornsby Shire.

HSMS Museum is located in Kenley Park, Normanhurst and is set up as a series of rooms focusing on the period between World War I and World War II. The Society also undertakes a school program for Stage 1 students where they can participate in a series of activities such as having a lesson in a school room from the 1930s, learning how people carried out daily activities in the kitchen, bathroom and laundry, and also learn about shopping in the 1930s and to experience sock washing on a washboard out in the park.

For more information visit our Facebook page or website.



Open: Sun to Thur 10am - 2pm (other times by appl.)
Entry: Adults: \$5, Child \$2

**Take a trip back in time.
Set on Wyong's first land grant.**

- See memorabilia relating to the early settlers of Wyong and surrounds
- Morning tea/lunch for group bookings
- Picnic area with BBQs and toilets
 - Plant Nursery
 - Wheelchair accessible
 - Outdoor areas dog friendly

Something for Everyone

1 Cape Rd, Wyong 2259

T: 4352 1886

www.alisonhomestead.com.au

Historic Ebenezer Church

www.discoverthehawkesbury.com.au/heritage/churches

Discover Ebenezer! Situated on the banks of the Hawkesbury River, Ebenezer is home to Australia's oldest church (1809) and schoolhouse (c1810).

The church shop is a popular place to visit and enjoy a delicious Devonshire tea (closed Monday and Tuesdays).



Ebenezer Church

Ebenezer Church was established in 1809 and is Australia's oldest existing church.

Visit Ebenezer Church, its colonial graveyard and nearby Schoolmaster's House.

Open Wednesday to Sunday from 10.00am to 3.00pm for devonshire teas, books, craft, jams and souvenirs.

95 Coromandel Rd, Ebenezer 2756

Phone 02 4579 9350 or 0438 777 215

www.ebenezerchurch.org.au



Hornsby Shire Arts and Culture

www.hornsby.nsw.gov.au/arts

Hornsby Shire's thriving arts scene is centred around its artistic hub, the Wallarobba Arts and Cultural Centre in Hornsby. If you're artsy, the centre is a creative's dream with a community art studio, a purpose-built printmaking room, art classes, an artists' lounge and gallery space.



Arcadian Artists Trail

www.arcadianartists.net.au

Don't miss it! 11 & 12 November 2023

Visitors are invited to visit 6 beautiful open studios in Arcadia, Galston and Dural on the rural outskirts of Sydney. At each venue, very creative and talented artisans will show their beautiful handmade items, all available for purchase. Included this year are photographers, jewellers,



painters, sculptors, textile artists, woodworkers, printmakers, potters and fashion designers. Don't miss this wonderful opportunity to look inside working studios and possibly find that very special something to buy. Enjoy driving through this delightful part of Sydney and following the trail of the Arcadian Artists. Local cafes and restaurants are scattered throughout the area and delicious food and refreshments will be available at some of the venues.

A brochure and map of the trail will be available in October, detailing the locations of the studios and outlining the work of individual artists.

Our Artists Trail is sponsored by Bendigo Bank who generously encourage the local and wider community to experience these delights.

The Ku-Ring-Gai Art Society

www.ourkas.com.au

The Ku-Ring-Gai Art Society will celebrate its 60th Anniversary in 2025 and is a non-profit organisation, run by artists for the benefit of artists and those interested in the arts.

Founded in 1965, the Society has established and maintained a reputation for excellence, attracting artists from a wide spectrum of disciplines, covering both traditional and contemporary two dimensional works in all media.

The Society meets at 7.30pm on the first Tuesday of each month (except January) at the Masonic Hall, corner Pacific Highway & Turramurra Avenue, Turramurra, with guest speakers or leading artists demonstrating a variety of techniques in oils, watercolours, acrylics, drawing and much more.

The principal objectives of the Society are to foster all branches of the Visual Arts and to enhance the status of art and artists in the community by providing innovative and up to date activities for artists to advance their talents.

The Society has 3 art exhibitions annually at St Ives Shopping Centre, periodic workshops & demonstrations. Details can be found on the Society's website.

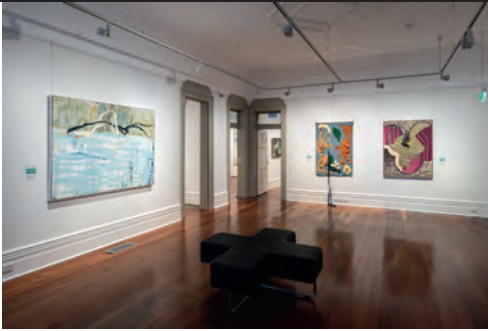


Hornsby Art Society

www.hornsbyartsociety.com.au

Hornsby Art Society which is based at Wallarobba Arts and Cultural Centre, 25 Edgeworth David Avenue, Hornsby, is a vibrant and active organisation. There are exhibitions, workshops and monthly demonstrations, as well as regular Plein Air painting at various locations as well as a painting group which meets each Tuesday simply for the opportunity to be with other kindred souls. There are also opportunities to volunteer at various functions and to make new friends. Membership is not selective and it is not necessary to be an artist, but just have the desire to belong, and have a love of the arts. New members and visitors are very welcome.

Contact us via our website, facebook, or email: hornsbyartsociety@gmail.com . phone: 02 9476 8869.



The Grace Cossington Smith biennial art award for two dimensional artworks February 2023



ART NORTH 2023 HSC Visual Arts students from schools in the Hornsby and Ku-ring-gai district.

Grace Cossington Smith Gallery

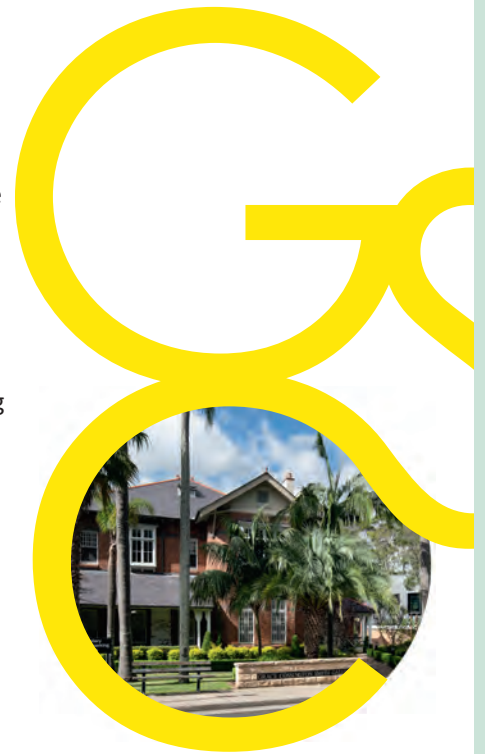
Gem of a Gallery

The Grace Cossington Smith Gallery is committed to providing a dynamic annual series of exhibitions, serving the public through free admission. An education program for diverse audiences and ages is also available.

The Grace Cossington Smith Gallery is located on the campus of Abbotsleigh, an Anglican pre K-12 Day and Boarding School for girls. Situated beside the Pacific Highway at Wahroonga.

For the Calendar of Exhibitions and Events, visit the gallery website www.gcsgallery.com.au to learn more about the exhibitions and other events taking place in this vibrant space.

Images by Richard Glover



Gallery hours Tuesday-Saturday 10 am-5 pm during exhibitions | Gate 7, 1666 Pacific Highway Wahroonga 02 9473 7878 | FREE ENTRY
gcsgallery@abbotsleigh.nsw.edu.au | www.gcsgallery.com.au | An Anglican Pre K-12 Day and Boarding School for Girls

Inspiring Art

www.gcsgallery.com.au

The Grace Cossington Smith Gallery is a flagship cultural institution on the upper North Shore.

Inside the beautiful 1905 heritage building expect to find curated exhibitions of modern and contemporary Australian art. It is a vibrant space with a changing exhibition program that inspires creativity and invites you to put your imagination to work.

The gallery presents regular exhibitions from local, established and emerging Sydney artists as well as curated exhibitions and works by students. Two highlights are the exhibition, ART NORTH, HSC works by students from Hornsby and Ku-ring-gai, and the biennial GCS art award attracting works from artists around the country.

The Grace Cossington Smith Gallery is located on the campus of Abbotsleigh, an Anglican pre K-12 Day and Boarding School for girls on the Pacific Highway at Wahroonga, NSW. It is a short walk from Wahroonga train station, and parking available in front of the gallery. It is open to the public five days a week, with free admission and all groups and individuals are welcome.

Visit the gallery website to learn more about the exciting exhibitions, talks, workshops and other events taking place in this creative space.



Grace Cossington Smith Art Gallery - photo credit: Stephen Hall Ages



Bruce Donnelley, Gouldian Finches -
Top End Northern Territory, Acrylic



**KU-RING-GAI
ART CENTRE**

KU-RING-GAI ART CENTRE

A Bancroft Park, 3 Recreation Ave, Roseville NSW 2069

T 02 94240310 **W** krg.nsw.gov.au/artcentre

E artcentre@krg.nsw.gov.au **FB & Insta** @kuringgaiartcentre

Ku-ring-gai Art Centre

krg.nsw.gov.au/artcentre

Ku-ring-gai Art Centre offers visual art, creative writing and guitar classes for all ages and levels of experience. Outstanding facilities include a print room, a pottery and sculpture studio with five kilns and an exhibition gallery. Held in light airy studios, the centre provides friendly and creative classes for kids and adults taught by industry professionals.

The Art Centre holds regular events such as artists talks and exhibitions throughout the year. Find out more by visiting their Facebook page or website.



Photo: Sisters building a Shopkins Hotel in the Ku-ring-gai Arts Centre studio

Hamley Studio

www.hamleystudio.com.au

Recent arrival to Hornsby is the Hamley Studio of Fine Art, a classical art school offering oil painting and drawing classes to artistic adults with any level of experience. Based in Hunter Street, the art school offers regular classes on weekdays and Saturday mornings, as well as an evening life drawing sketch club, and holiday workshops.

The teachers at Hamley Studio are all classically trained and include two-time Archibald finalist Sally Ryan. The school teaches portraiture and figure painting – with every class featuring a life model – as well as still life painting and basic drawing. Sally says, “We take everyone seriously at our studio, whether they’re an absolute beginner or an experienced painter.”

For those who live out of town, Hamley Studio’s intensive workshops which are mostly in portrait painting, are run during school holiday periods. There are five day workshops (sometimes shorter) or two or three day intensives. They are a great way to get started in the practice of oil painting. Hamley Studio teachers take you through their entire painting process from start to finish in just a couple of days. Beginners are absolutely welcome at the holiday workshops.



Hamley Studio runs four ten-week terms per year, aligning with the school terms.

You can book in for a term via the website at www.hamleystudio.com.au or if you’d like to join after a term has started, just get in touch with the studio to find out which classes have spaces.



Drawing and Oil Painting Classes
& Workshops



Basic Drawing - Still Life - Portrait and Figure - Life Drawing

Tutors : Ben Ryan Sally Ryan Sandra Brand

www.hamleystudio.com.au

0435 457 107

107 Hunter Street, Hornsby

hello@hamleystudio.com.au

Local Churches

ASQUITH CHURCH OF CHRIST

3 Amor Street, Asquith Ph: (02) 9477 7987
www.asquithchurchofchrist.com
 Pastor: Andrew Maxwell (0408 094 868)



Service Times:

Sunday: 9:30am - Family Worship, which includes 6UP and Sunday for Kids
Sunday: 1.00pm - Sydney Manna Church, Korean speaking
Tuesday: 1st, 3rd & 5th Tuesdays 10-12noon 'Little Angels' Playgroup (school term)
Friday: Misfits Youth Group - 7pm-9pm (school term)
 Men's, Women's and Mixed Adult Growth Groups - Contact Pastor Maxwell for details
Mission Op Shop: at 393 Pacific Hwy Asquith, Mon-Fri 9.30am-4.30pm, Sat 9.30am-1.00pm

BEROWRA UNITING CHURCH

4-6 Alan Road, Berowra Heights 2082
 Ph: (02) 9456 6041
www.berowra.unitingchurch.org.au
 Email: minister@berowra.unitingchurch.org.au



COMMUNITY LIFE CHURCH CHERRYBROOK

Ph: (02) 9651 3534
www.communitylife.org.au



Service Times:

Sunday: 9.15am service @ Cherrybrook Technology High School, Purchase Rd, Cherrybrook.
Sunday: 5.30pm service @ the HUB, Unit 18, 252 New Line Rd, Dural (includes dinner).
Friday: Revolution Youth 7.00-9.15pm @ the HUB (students in Year 6-12)
Life Centre: Counselling, Life Coaching, Music Therapy

EBENEZER CHURCH - since 1809

95 Coromandel Road, Ebenezer
www.ebenezerchurch.org.au
 See our advertisement on pg 47 of this guide



GALSTON UNITING CHURCH

11 School Road, Galston Ph: (02) 9653 2039



Service Times:

Sunday Service: 10am & Kids 10am
KUCA: (primary school children) 5pm-6.30pm Fridays of school term.
Craft: 12noon-4pm Thursdays of the school term
Over 55's: 10.00am 2nd Monday of the month, Bible Study Groups, Ladies' and Men's Choir.

Galston Uniting Church



HORNSBY UNITING CHURCH

24 William Street, Hornsby Ph: (02) 9476 5340
Hornsby.unitingchurch.org.au



Service Times:

Sunday: 9:30am (Korean language services from 11:30am)
Other Activities: include Seniors social groups, bible studies and prayer, craft group, Tai Chi.

MT COLAH UNITING CHURCH

Cnr Pacific Highway & Amaroo Avenue, Mt Colah
 Ph: (02) 9476 5137
www.mtcolah.unitingchurch.org.au and Facebook



Sunday Services:

9am Worship & morning tea. Communion 2nd Sunday. Service also online.

Regular Activities

- Busy Bee Craft and Computers - Thursday 9.30am-12.30pm during school terms.
- Coffee & Chat" 2nd & 4th Wednesday each month, 9.30-11.00am.
- Let's Chat in English - Friday 10.00am-12.00noon during school terms
- Garden Playgroup - Monday 9.30-11.30 during school terms
- Zumba - Saturday 10.30am-11.30am
- Mid-week Bible study groups

ST PHILIP'S ANGLICAN CHURCH

1-3 Parkinson Avenue, South Turrumurra
 Ph: (02) 9988 4998
www.stphilips.au



Service Times:

8am: A warm and welcoming traditional communion service.
10am: A vibrant and contemporary service for people of all ages, with a variety of children's programs for those in pre-school to year 6.
5pm: A relaxed and contemporary service for people of all ages, especially youth and young adults.

During term time:

- Mainly Music: Mondays at 10am
- English Conversation Classes: Wednesdays 10am
- Friday Afternoon Youth Programs:
 - Spin Kids (Years 3-6) 3.30pm-5pm - Spin Youth (Years 7-12) 6.30-8.30pm

WAITARA ANGLICAN CHURCH

34 Palmerston Road, Waitara
 Ph: (02) 9489 4793
www.waitaraanglican.com.au



Sunday Service Times:

8:30am: Traditional Service
10am: Family Service with children's programme
6pm: Evening Service

Activities:

- Ladies' Craft Morning Tea: 9:30am-11.30am, 1st and 3rd Tuesdays
- Ministry of Game: Board games & role-playing games, for adults over 18yrs. Tuesdays 7pm to 10pm
- Friday (Way) Waitara Anglican Youth: School years 6-9 during school term 6.30pm-8.30pm

WAT BUDDHA DHAMMA FOREST MONASTERY

10 Mile Hollow, Wisemans Ferry
 Ph: 0409 389 887
www.wbd.org.au
 Email: wbdoffice@gmail.com



Abbot: Ajahn Khemavaro
 Office hours: 8am - 1pm everyday. Offers meditation retreats and visitors are welcome. Please call the office for the gate code.

Service Times:

Daily Meal Offering: 10am
Saturday: 6pm Dhamma Talk and Meditation

Please support the amazing local advertisers who feature in the 15th Edition of the Hornsby Ku-ring-gai Visitors Guide!

Alister Henskens MP

Anglers Rest Hotel

BBQ Boat Hire Berowra Waters

Berowra Uniting Church Markets

Berowra Waters Boat Hire

Berowra Waters Holidays

Café Patina

Canoelands Orchards

Church Point Ferry Service

Complete Property Agency

Dural Putt Putt

Ebenezer Church

Empire Marina - Bobbin Head

Enzos Cucina

Fenwicks Marina

Forbes Footwear

Forestry Corporation - Cumberland State Forest

Golden Kangaroos

Grace Cossington Smith Gallery

Hamley Studio of Fine Art

Hawkesbury River Oyster Shed

Hawkesbury Water Taxi

Holidays Afloat

Hornsby Aquatic Leisure Centre

Hornsby Lions Club

Hornsby RSL

Hornsby Shire Council

IBIS Sydney Thornleigh

Ingenia Holiday Parks - Avina & Sydney Hills

Julian Leeser MP

Kiplings Wine Bar

Ku-ring-gai Fitness & Aquatic Centre

Ku-ring-gai Council

Ku-ring-gai Philharmonic Orchestra

Maggpies Waitara

Map Local

Matt Kean MP

NSW National Parks & Wildlife Service

Organic Food Markets

Riverfront Real Estate

Siboni's Coffee

St Ives Shopping Village

Sydney Oyster Tours

The Bookplate Book Shop

The Emporium

The Floating Oyster Wine Bar

The Galston Club

The Riverboat Postman

The Village Markets

Thornleigh Golf Centre

Turrumurra Fresh Food Produce & Artisan Market

Waterside Bistro

West Pymble Bicentennial Club

Wild Luxury

Wiseman's Ferry Grocer

Wyong District Museum / Alison Homestead



Berowra Woodchop



**Vibrant
economy hotel,
open to
everyone.**

Conveniently located in the north west of Sydney, with easy access to the Central Coast motorway, minutes from Thornleigh shopping centre, and a short distance from the vibrant hubs of Hornsby, Epping, Pennant Hills and Chatswood. Visitors looking to explore the area are within easy reach of the beautiful Ku-ring-gai Chase National Park, the Koala Park Sanctuary and Rosehill Race Track. The hotel offers onsite parking and 24/7 food & beverage service from our Ibis Kitchen.



**SYDNEY
THORNLEIGH**

**Ibis Sydney Thornleigh
200-212 Pennant Hills Road
Thornleigh NSW 2120**

**Ph. 02 9481 7500
Fax. 02 9481 7511**

**Email: h3238@accor.com
Website: www.accorhotels.com**



The Triple Zero (000) service is the quickest way to get the right emergency service to help you. It should be used to contact Police, Fire or Ambulance service in life threatening or emergency situations.

Calls to Triple Zero (000) are free and can be made from mobile phones, home or work phones or pay phones.

© Commonwealth of Australia 2018.

WHO DO I CALL? *Community Contacts*

It is important for people visiting an area to know who to contact in an emergency, and to know where to access essential local information. Here are some commonly sought contacts.

- Hornsby Police Station, 292 Peats Ferry Rd, Hornsby: (02) 9476 9799
- Crimestoppers Hotline 1800 333 000
- Bush Fire Information Line 1800 NSW RFS (1800 679 737) www.rfs.nsw.gov.au
- Hornsby State Emergency Service (SES) 24 Hour Hotline 132 500
- Hornsby Ku-ring-gai Hospital, Palmerston Road, Hornsby (02) 9477 9123
- Hornsby Shire Council www.hornsby.nsw.gov.au (02) 9847 6666
- Ku-ring-gai Municipal Council www.kmc.nsw.gov.au (02) 9424 0000
- Marine Rescue NSW www.marinerescuensw.com.au (02) 9450 2468
- The Hawkesbury Companion Animal Shelter www.hawkesbury.nsw.gov.au (02) 4560 4644
- Transport NSW Trip Planner www.transportnsw.info/
- Transdev Bus Timetable www.transdevnsw.com.au/
- Hawkesbury River Tourism Group hawkesburyriver.org.au/
- Sydney Visitor Centre www.sydney.com
- NSW Tourist Information www.visitnsw.com
- For help with sick, injured or orphaned native wildlife:
Central Coast: (02) 4325 0666
Sydney Metro: (02) 9413 4300
WIRES: 1300 094 737

Net Zero Ku-ring-gai

Discover what you can do now to lower your emissions and have a low-cost comfortable home.

Get started

- Electrify everything in your home
- Install solar or switch to green power
- Reduce, repair, reuse and recycle

Find actions, rebates, workshops and more on our new website
netzero.krg.nsw.gov.au

LOVING LIVING
KU-RING-GAI
Sustaining Sydney's green heart

Ku-ring-gai Council

Alister Henskens SC MP

Member for Wahroonga

It is my pleasure to be able to serve our community as the Member for Wahroonga in the NSW Parliament.

How can I help you?

- ✓ Represent you in the NSW Parliament;
- ✓ Provide information on NSW Government services and policies;
- ✓ Take your problem to the appropriate Minister or Department for a response; and
- ✓ Organise congratulatory messages.

Please do not hesitate to call my office.

02 9487 8588
AlisterHenskens.com.au
wahroonga@parliament.nsw.gov.au

Authorised by Alister Henskens SC MP, 27 Redleaf Avenue, Wahroonga NSW 2076, funded using parliamentary entitlements.

Matt Kean MP

Member for Hornsby

Keen to Help you by

- Representing you in the NSW Parliament
- Assisting you to access State services
- Communicating your issues to the relevant Ministers
- Organising Justice of the Peace applications
- Recognising State achievements

For COVID-19 updates visit www.nsw.gov.au/covid-19

(02) 9476 3411 | hornsby@parliament.nsw.gov.au
PO Box 1687, Hornsby Westfield NSW 1635

As your Federal Member, I am here to:

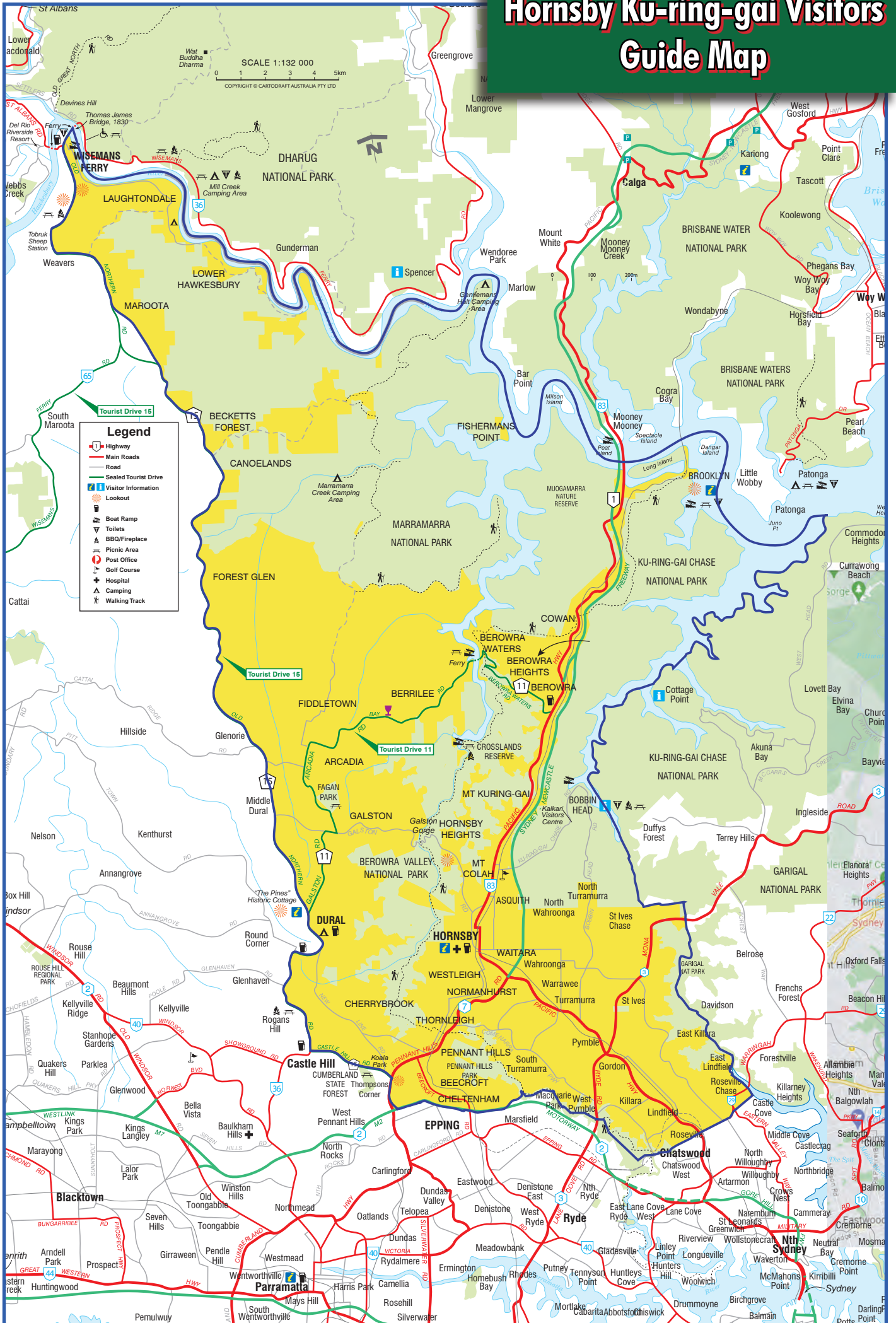
- Assist with accessing Federal Government services
- Attend your local community event
- Arrange congratulatory messages

JULIAN LEESER MP
FEDERAL MEMBER FOR BEROWRA

Level 11, 423 Pennant Hills Road, Pennant Hills NSW 2120
02 9980 1822 | julian.leeser.mp@aph.gov.au
julianleeser.com.au | [julianleesermp](https://www.facebook.com/julianleesermp)

Authorised by Julian Leeser MP, Liberal Party of Australia, Level 11, 423 Pennant Hills Road, Pennant Hills NSW 2120.

Hornsby Ku-ring-gai Visitors Guide Map





HORNSBY KU-RING-GAI
VISITORS GUIDE



Find us on Facebook

HKVG digital edition: hkv.com.au

